

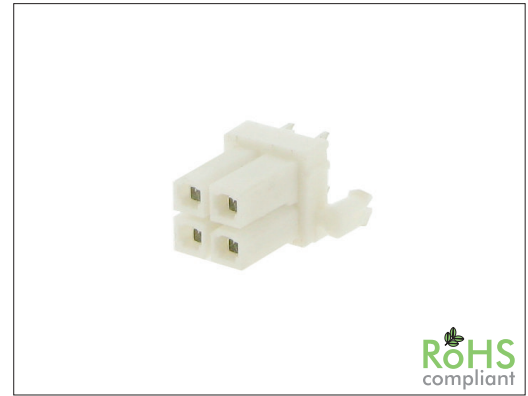
2424 Series

4.20 mm MF Housing for P.C.B. Mounting

General specifications

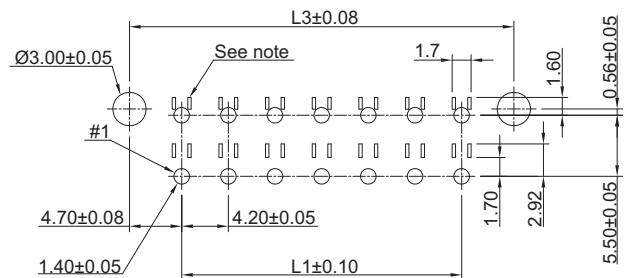
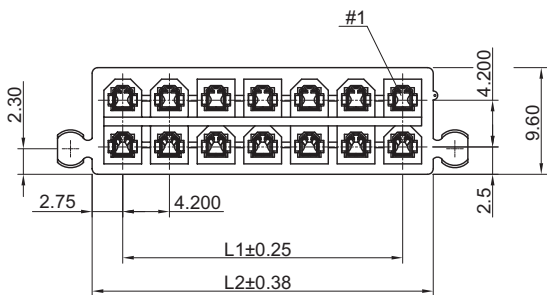
| | |
|---------------------------|---|
| Insulator material | Nylon, color: nature |
| Contact material | Brass |
| Current rating | 8 A (for 2 pins 9 A, for 8 to 10 pins 7 A) |
| Voltage rating | 600 V AC/DC |
| Contact resistance | 10 mΩ max. |
| Insulator resistance | 1000 MΩ min. |
| Dielectrical withstanding | 1500 VAC for 1 min |
| Operating temperature | UL94V-0: -40 °C to +105 °C, UL94V-2: -25 °C to +85 °C |
| Soldering | Lead free wave soldering process |

Mating parts series

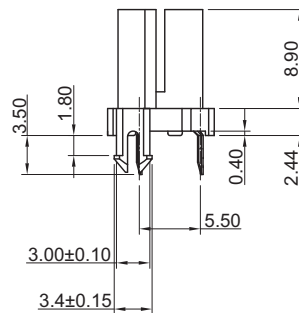
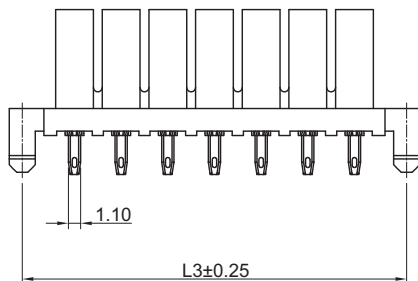


Mechanical dimensions

Unit: mm



Recommend P.C.B. layout
 Note: Phantom lines indicate areas where terminal standoffs contact P.C.B.



$$L1 = \left(\frac{\text{No. of contacts}}{2} - 1 \right) \times 4.20$$

$$L2 = L1 + 5.5$$

$$L3 = L1 + 9.4$$

Tolerances

| | | |
|--------|------|--------|
| Linear | X | ± 0.38 |
| | .XX | ± 0.25 |
| | .XXX | ± 0.10 |

Part numbering guide



Series

F = THT straight

No. of contacts

02 to 24

Contact plating

T = Tin

Material option

V2 = UL94V-2

leave blank for UL94V-0

* standard

