

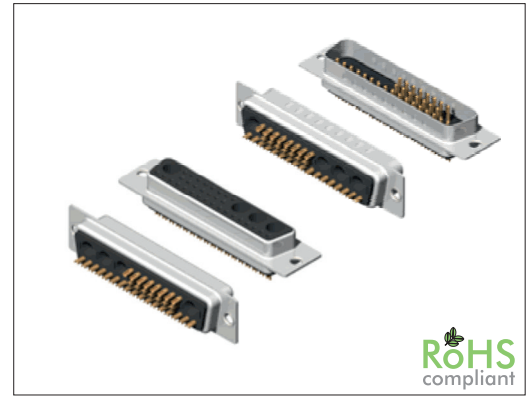
3110 Series

D-Sub 36W4 Housing

General specifications

Insulator material	Glass filled polyester, UL94V-0
Contact material	Brass
Shell material	Steel, plating: tin
Signal contact rating	3 A
Contact resistance	10 mΩ max.
Insulator resistance	5000 MΩ min.
Dielectrical withstanding	1000 VAC for 1 min
Operating temperature	-55 °C to +125 °C
Durability	100 cycles

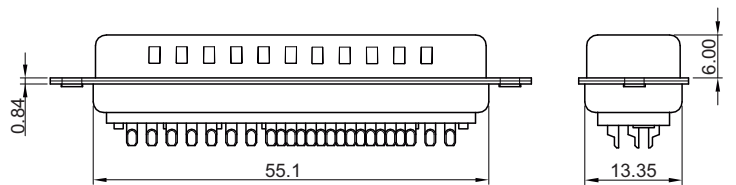
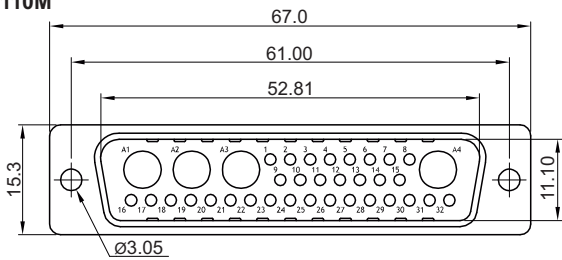
Mating parts series



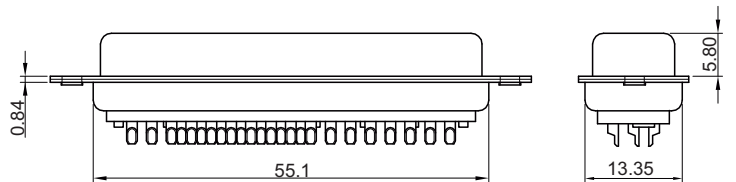
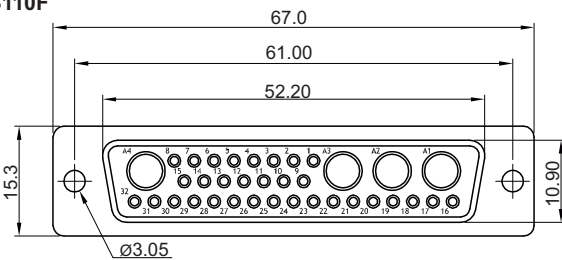
Mechanical dimensions

Unit: mm

3110M



3110F

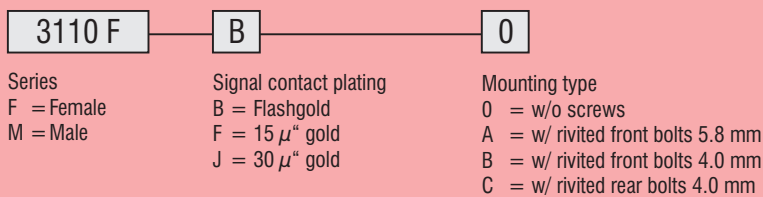


Applicable contact series	
High power	3117, 3118
Coaxial	3119

Type 0 (w/ Ø3.05 holes)	Type A (w/ rivited front bolts)	Type B (w/ rivited front bolts)	Type C (w/ rivited rear bolts)

Tolerances		
Linear	X	± 0.30
	XX	± 0.20
	XXX	± 0.10

Part numbering guide



* standard

