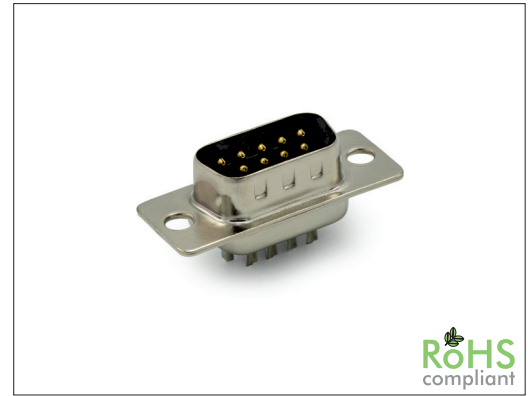


# 3032 Series

# D-Sub Male Solder Type

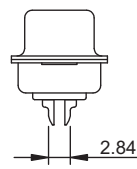
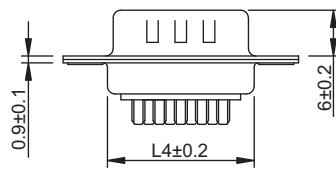
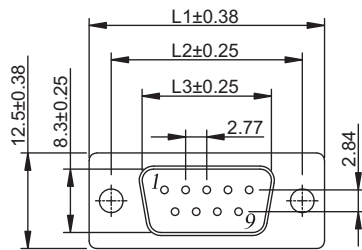
## General specifications

Insulator material	PBT, UL94V-0, color: black
Contact material	Copper alloy, metal shell: steel
Current rating	5 A
Contact resistance	30 mΩ max.
Insulator resistance	1000 MΩ min. @ 500 VDC
Dielectrical withstanding	500 VAC for 1 min
Operating temperature	-40 °C to +150 °C
Soldering	JEDEC lead free wave soldering process
<b>Mating parts series</b>	



## Mechanical dimensions

Unit: mm



Contacts	L1	L2	L3	L4
09	30.80	25.00	16.92	19.20
15	39.20	33.30	25.25	27.70
25	53.10	47.10	38.96	41.10
37	69.40	63.50	55.42	57.30

Type 0 (w/o screws)	Type B (w/ riveted rear bolts)	Type E (w/ riveted front bolts)

Tolerances		
Linear	X	± 0.25
	.XX	± 0.10

## Part numbering guide

<b>3032 M</b>	<b>09</b>	<b>B</b>	<b>0</b>
Series M = Male	No. of contacts 09, 15, 25, 37	Contact plating B = Flashgold* E = 10μ" gold F = 15μ" gold J = 30μ" gold	Mounting type 0 = w/o screws B = w/ riveted rear bolts 4.0 mm E = w/ riveted front bolts 5.8 mm

\* standard

