

1470 Series

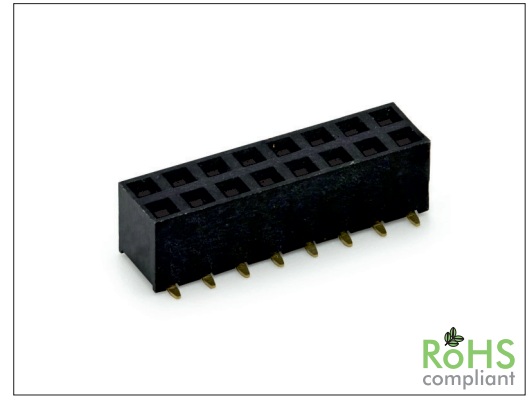
2.00 mm SMT Female Header Dual Row Dual Entry

General specifications

Insulator material	Nylon-6T, UL94V-0, color: black
Contact material	Phosphor bronze
Current rating	2 A
Contact resistance	20 mΩ max.
Insulator resistance	5000 MΩ min.
Dielectrical withstanding	500 VAC for 1 min
Operating temperature	-40 °C to +105 °C
Soldering	JEDEC lead free reflow soldering process

Mating parts series

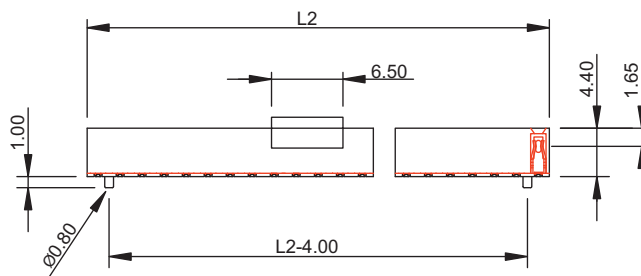
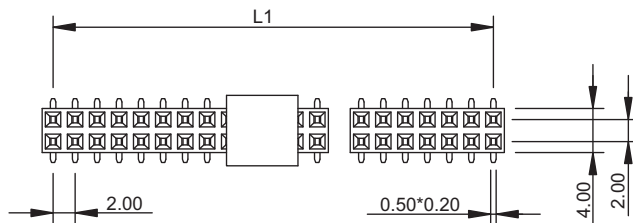
1320, 1334, 1420, 1422, 1434, 1435



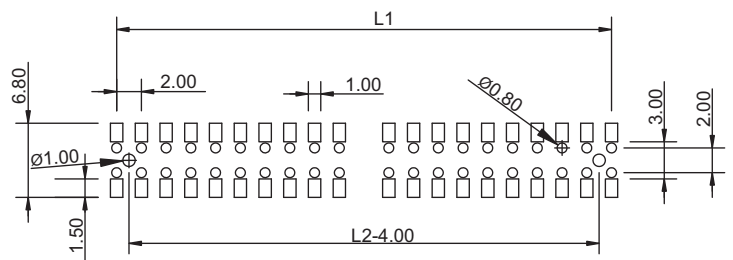
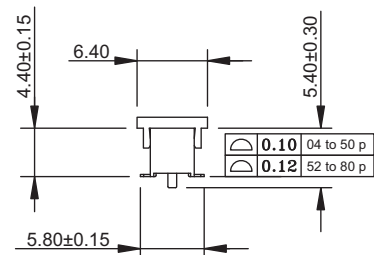
RoHS
compliant

Mechanical dimensions

Unit: mm



04 to 20 pin: 0.10 mm max.
22 to 50 pin: 0.20 mm max.
52 to 80 pin: 0.30 mm max.



Recommended P.C.B. layout

$$L1 = \left(\frac{\text{No. of contacts}}{2} - 1 \right) \times 2.00$$

$$L2 = \left(\frac{\text{No. of contacts}}{2} \right) \times 2.00$$

Tolerances	
Linear	.X ± 0.30
	.XX ± 0.20

Part numbering guide

1470 V	04	B	1	0	R
Series V = SMT vertical	No. of contacts 04 to 80	Contact plating B = Flashgold E = 10 μ" gold F = 15 μ" gold J = 30 μ" gold	Height T = Tin 1 = 4.35 mm	Position pegs 0 = w/o pos. pegs 1 = w/ pos. pegs	Packing w/ pick & place pad R = Reel T = Tube

* standard

