

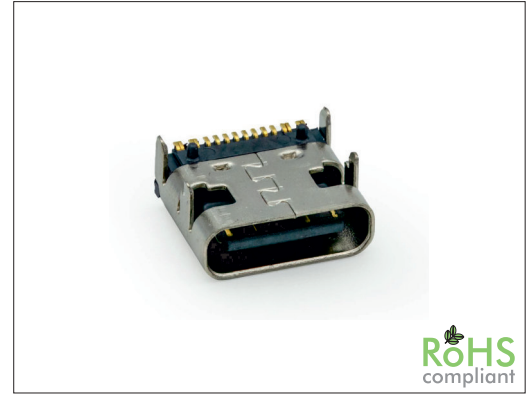
3833 Series

SMT USB C-Type 16 Pin Socket Side Entry

General specifications

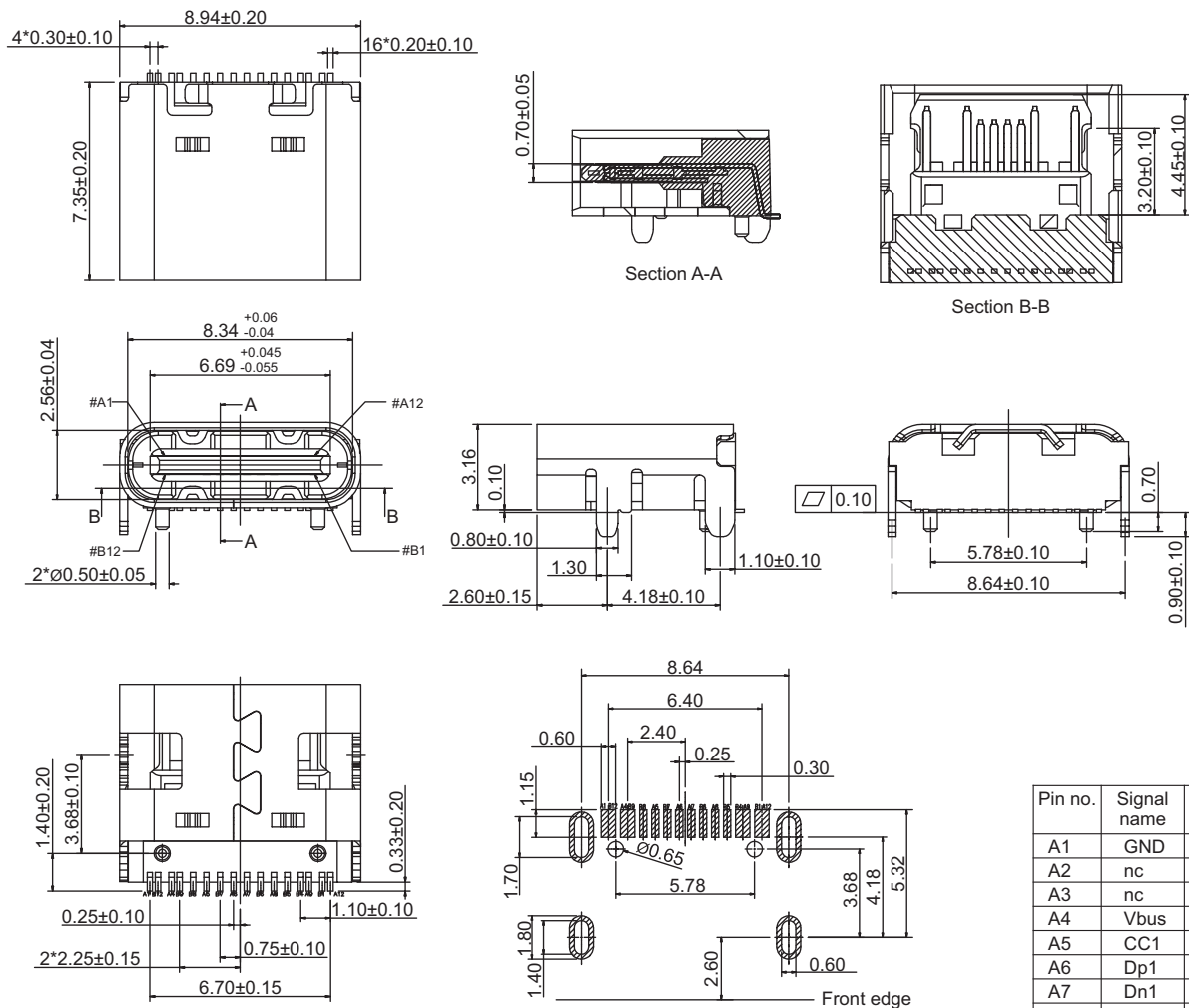
Insulator material	LCP w/ glass fiber, color: black
Contact material	Copper alloy
Current rating	5 A combined at 4 VBus pin, 1.25 A at VCONN pin, 0.25 A at all other pin
Voltage rating	20 V AC/DC
Insulator resistance	100 MΩ min.
Dielectrical withstanding	100 VAC for 1 min
Operating temperature	-40 °C to +105 °C
Durability	10000 cycles
Soldering	JEDEC lead free reflow soldering process

Mating parts series



Mechanical dimensions

Unit: mm

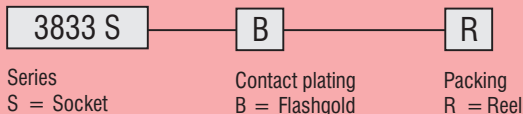


Pin no.	Signal name	Pin no.	Signal name
A1	GND	B12	GND
A2	nc	B11	nc
A3	nc	B10	nc
A4	Vbus	B9	Vbus
A5	CC1	B8	SBU2
A6	Dp1	B7	Dn2
A7	Dn1	B6	Dp2
A8	SBU1	B5	CC2
A9	Vbus	B4	Vbus
A10	nc	B3	nc
A11	nc	B2	nc
A12	GND	B1	GND

Recommended P.C.B. layout tolerances: ±0.05, thickness: 1.00

Tolerances		
Linear	X	± 0.25
	XX	± 0.20
	XXX	± 0.10

Part numbering guide



* standard

