

# 3522 Series

# SATA 15 Pin Male Right Angle

### General specifications

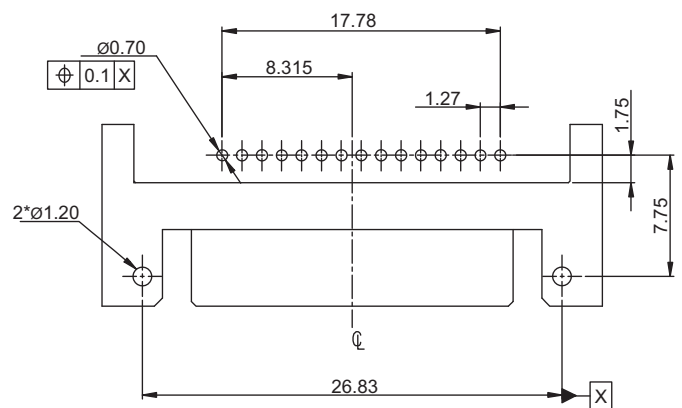
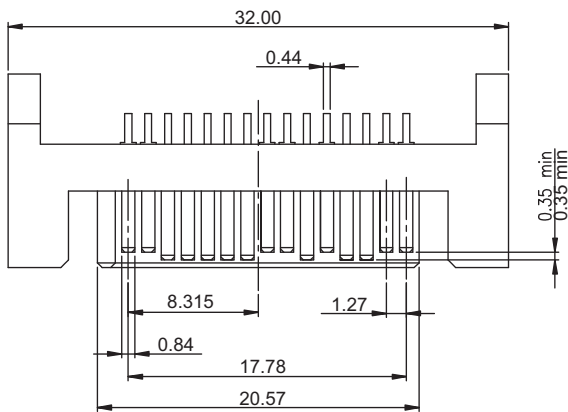
Insulator material	LCP w/ 30% glassfiber, UL94V-0
Contact material	Brass, plating: gold over nickel
Latch material	Brass, plating: tin over nickel
Current rating	1.5 A
Contact resistance	30 mΩ max.
Insulator resistance	1000 MΩ min.
Dielectrical withstanding	500 VAC for 1 min
Operating temperature	-25 °C to +105 °C
Soldering	Lead free wave soldering process

### Mating parts series

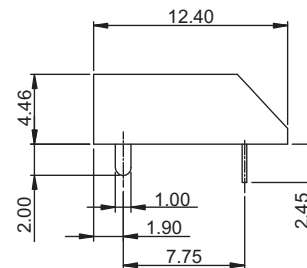
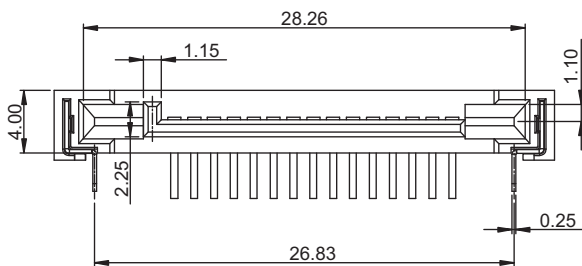


### Mechanical dimensions

Unit: mm



Recommended P.C.B. layout  
tolerance: ±0.05



Tolerances		
Linear	X	± 0.20
	.XX	± 0.15

### Part numbering guide

3522 R

Series  
R = THT right angle

F

Contact plating  
B = Flashgold  
F = 15 μ" gold\*

T

Packing  
T = Tube

\* standard

