

1630 Series

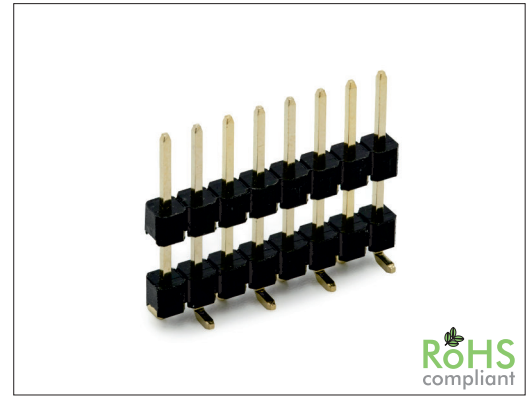
2.54 mm SMT Board Spacer

General specifications

| | |
|---------------------------|--|
| Insulator material | Nylon 6T, UL94V-0 |
| Contact material | Brass |
| Current rating | 3 A |
| Voltage rating | 250 VAC |
| Contact resistance | 20 mΩ max. |
| Insulator resistance | 5000 MΩ min. |
| Dielectrical withstanding | 1000 VAC for 1 min |
| Operating temperature | -40 °C to +105 °C |
| Soldering | JEDEC lead free reflow soldering process |

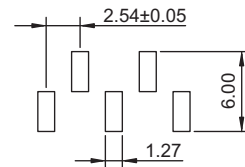
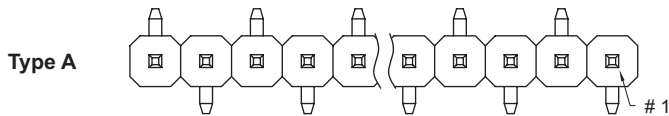
Mating parts series

1550, 1552, 1555, 1556, 1558, 1561, 1650, 1652, 1655, 1659, 1660, 1664, 1665

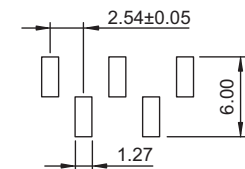
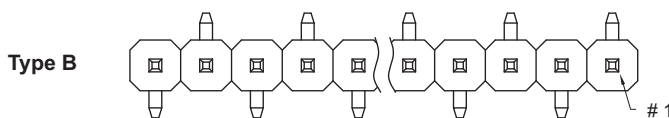


Mechanical dimensions

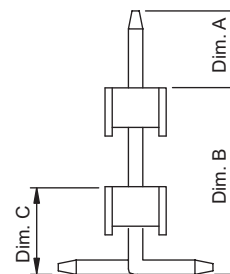
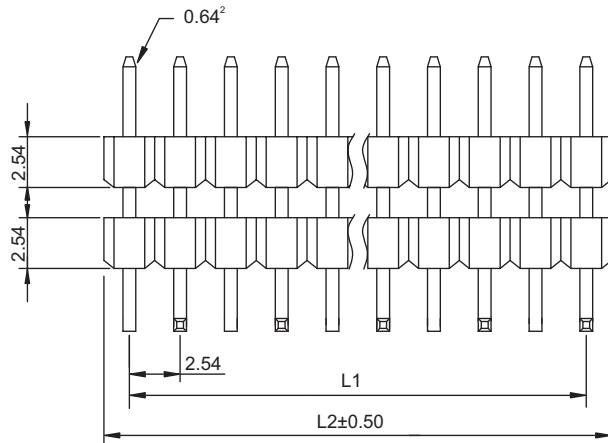
Unit: mm



Recommended P.C.B. layout



Recommended P.C.B. layout



$$L1 = (\text{No. of contacts} - 1) \times 2.54$$

$$L2 = \text{No. of contacts} \times 2.54$$

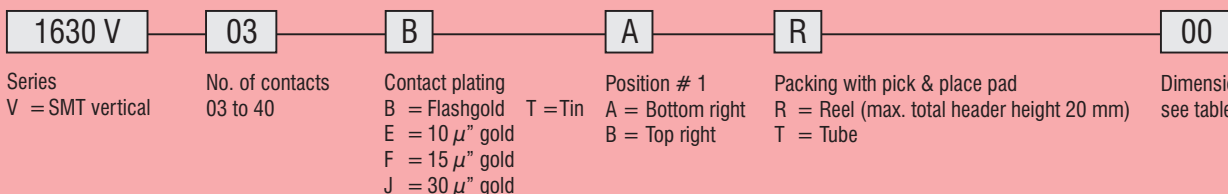
Ordercode dimensions

| Index | Dim. A | Dim. B | Dim. C |
|-------|--------|--------|--------|
| 00 | 6.00 | 10.00 | 3.84 |
| 01 | 5.70 | 12.20 | 3.84 |
| 02 | 3.30 | 16.70 | 3.84 |

other pin length on customer request

| Tolerances | |
|------------|------------|
| Linear | X ± 0.30 |
| | .XX ± 0.20 |

Part numbering guide



* standard

