

# 2256 Series

# 2.50 mm Housing and Terminal

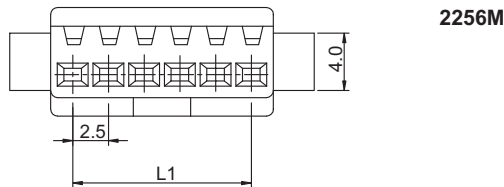
### General specifications

Insulator material	Nylon 66, UL94V-2, color: black
Contact material	Brass, plating: tin
Current rating	3 A
Volage rating	250 V AC/DC
Contact resistance	20 mΩ max.
Insulator resistance	500 MΩ min.
Dielectrical withstanding	1000 VAC for 1 min
Operating temperature	-25 °C to +85 °C
<b>Mating parts series</b>	
2256-PT or cable assembly	

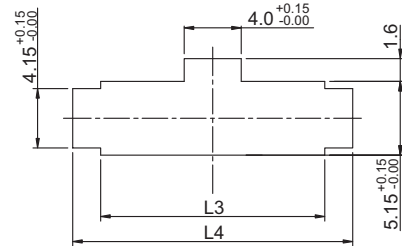
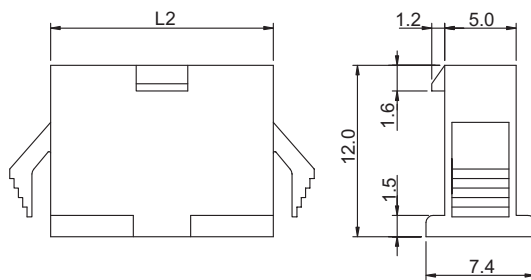


### Mechanical dimensions

Unit: mm

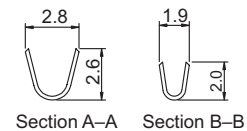
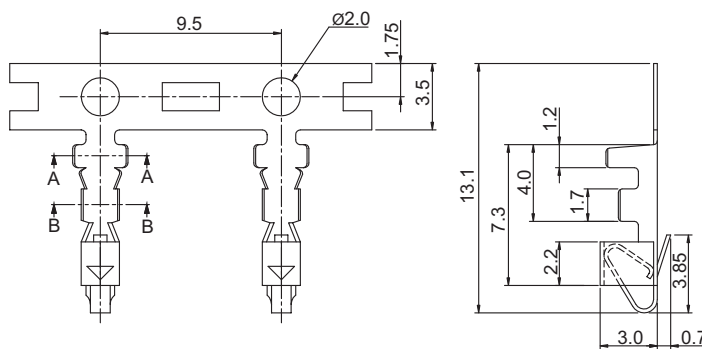


- L1 = No. of contacts x 2.50 - 2.50
- L2 = No. of contacts x 2.50 + 0.70
- L3 = L2 + 0.10
- L4 (t=0.5 to 0.9) = L2 + 3.90
- L4 (t=1.0 to 1.5) = L2 + 4.10
- L4 (t=1.5 to 2.0) = L2 + 4.30



Panel cut-out (t = material thickness)

### 2256Z



Tolerances	
Linear	X ± 0.38
	.XX ± 0.25

Wire range: AWG 22 to 28

### Part numbering guide

**2256 M** — **02**

Series  
M = Housing  
Z = Terminal

No. of contacts  
02 to 12  
(leave blank for terminal)

\* standard

