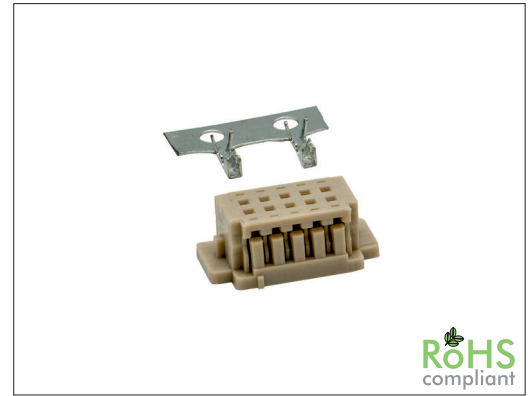


# 2125 Series

# 1.25 mm MDD Housing Dual Row and Terminal

## General specifications

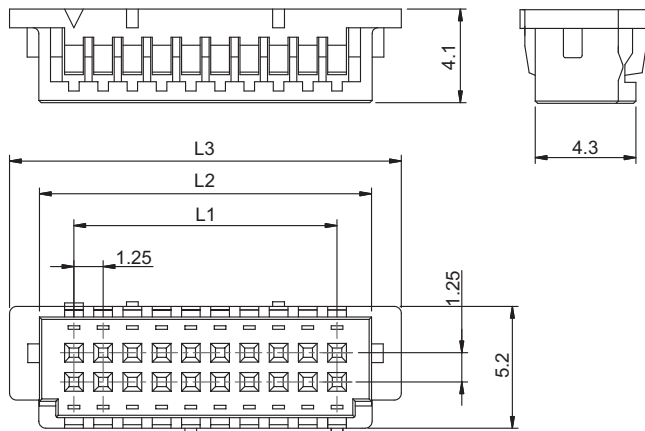
Insulator material	Nylon 66, UL94V-0, color: ivory
Contact material	Phosphor bronze, plating: tin
Current rating	1 A
Voltage rating	150 V AC/DC
Contact resistance	30 mΩ max.
Insulator resistance	500 MΩ min.
Dielectrical withstanding	500 VAC for 1 min
Operating temperature	-35 °C to +85 °C
<b>Mating parts series</b>	
2125-V	



## Mechanical dimensions

Unit: mm

2125P

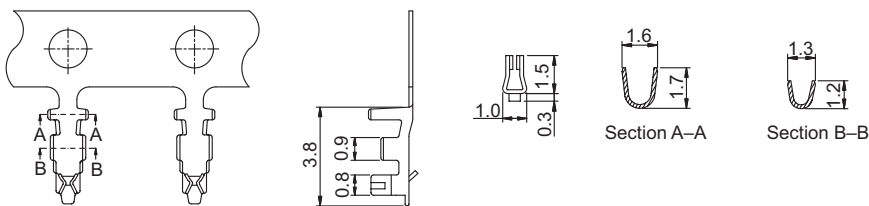


$$L1 = \text{No. of contacts} / 2 \times 1.25 - 1.25$$

$$L2 = \text{No. of contacts} / 2 \times 1.25 + 1.75$$

$$L3 = L2 + 2.40$$

2125T



Wire range: AWG 26 to 32

Tolerances		
Linear	.X	± 0.38
	.XX	± 0.25

## Part numbering guide

2125 P

10

Series  
P = Housing  
T = Terminal

No. of contacts  
10, 20, 30, 40, 50  
(leave blank for terminal)

\* standard

