

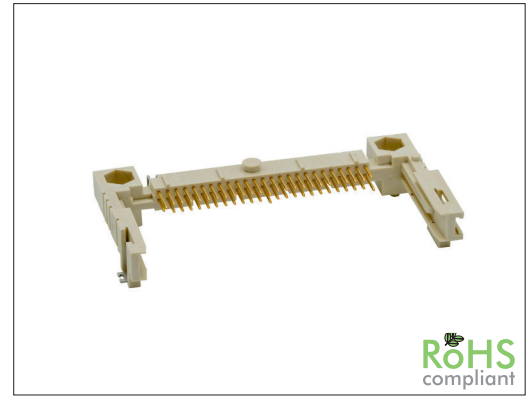
# 0100 Series

# CF SMT Type I+II

## General specifications

Insulator material	LCP, UL94V-0, color: white
Contact material	Copper alloy, plating: gold over nickel
Current rating	0.5 A
Voltage rating	100 V AC/DC
Contact resistance	40 mΩ max.
Insulator resistance	1000 MΩ @ 500 VDC
Dielectrical withstanding	500 VAC for 1 min
Operating temperature	-55 °C to +85 °C
Durability	10000 cycles
Soldering	JEDEC lead free reflow soldering process

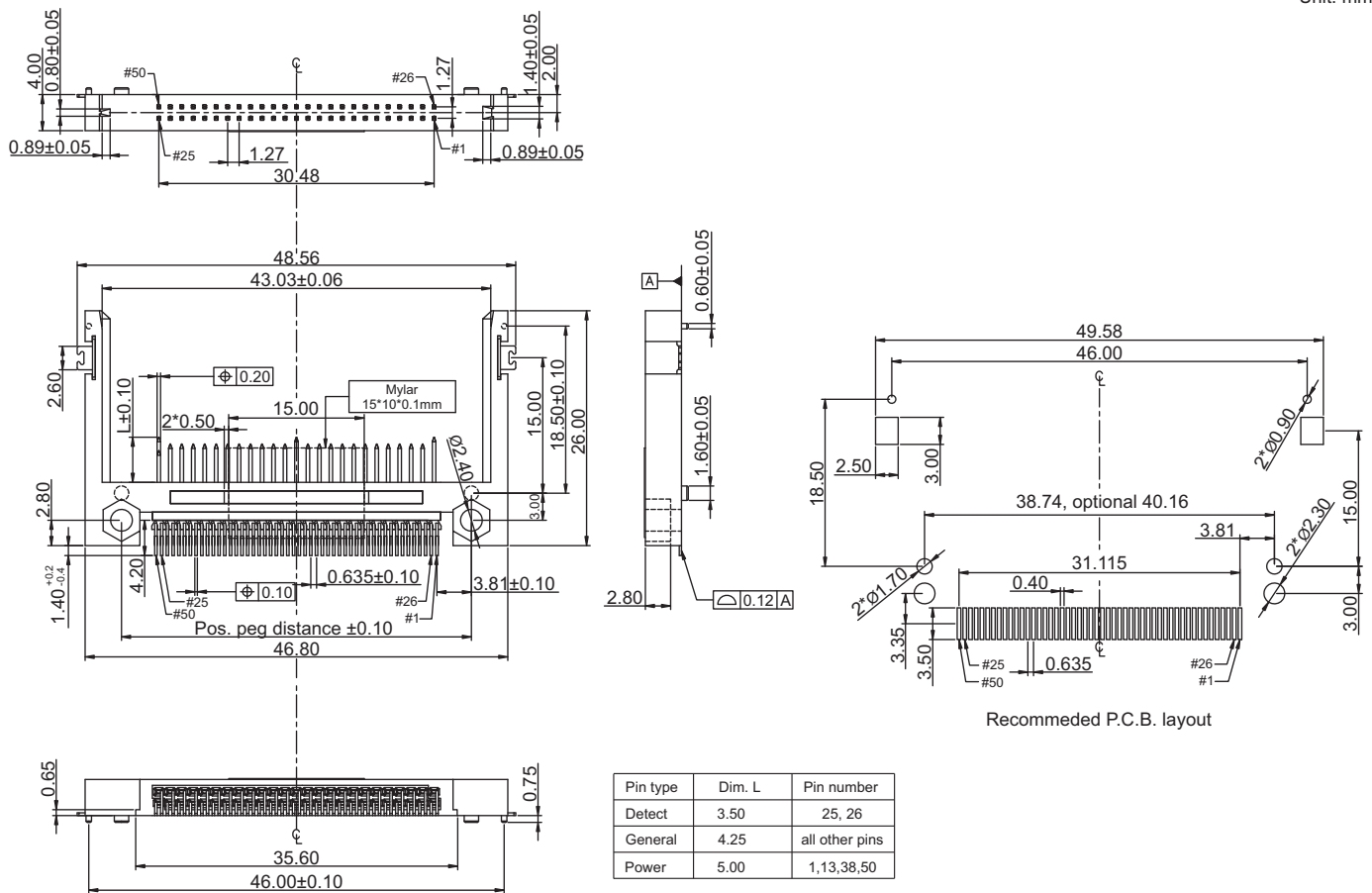
## Mating parts series



RoHS  
compliant

## Mechanical dimensions

Unit: mm



Tolerances	
Linear	X. ± 0.5
	.X ± 0.3
	.XX ± 0.2

## Part numbering guide

<b>0100</b>	<b>F</b>	<b>0</b>	<b>0</b>	
Series	Contact plating D = 5μ" gold F = 15μ" gold* J = 30μ" gold	Position peg distance 0 = 38.74 mm 1 = 40.16 mm	Standoff 0 = w/o standoff	Packing leave blank for tray R = reel

\* standard

