

# 2393 Series

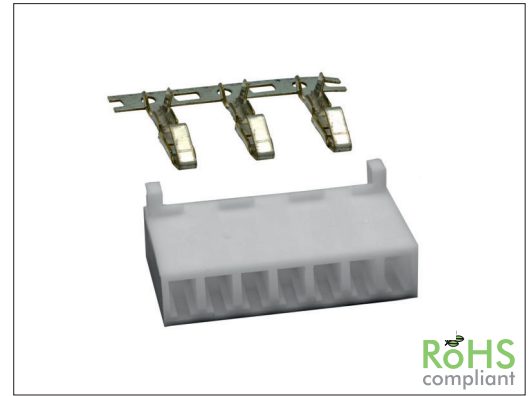
# 3.96 mm UH Housing and Terminal

### General specifications

Insulator material	Nylon 66, UL94V-0, color: nature
Contact material	Brass, plating: tin
Current rating	6.5 A
Voltage rating	250 V AC/DC
Contact resistance	10 mΩ max.
Insulator resistance	1000 MΩ min.
Dielectrical withstanding	500 VAC for 1 min
Operating temperature	-55 °C to +105 °C
Wire range	AWG 18 to 24

### Mating parts series

2393-SR



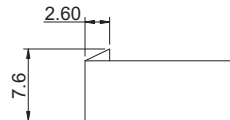
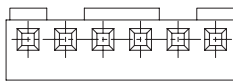
RoHS  
compliant

### Mechanical dimensions

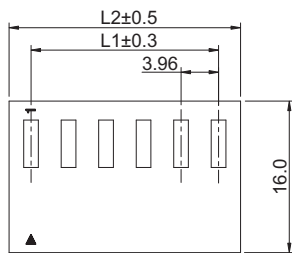
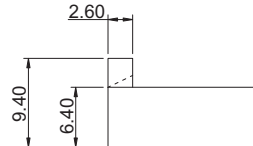
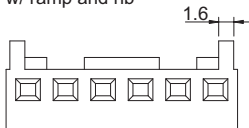
Unit: mm

#### 2393P

w/ ramp



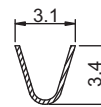
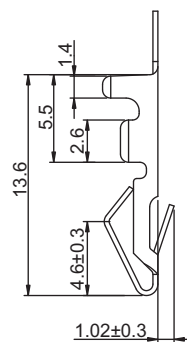
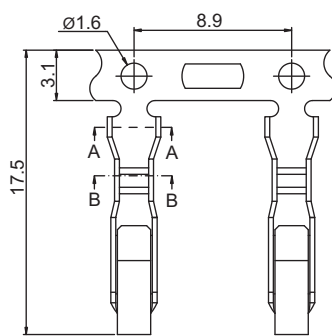
w/ ramp and rib



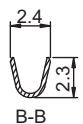
$$L1 = (\text{No. of contacts} - 1) \times 3.96$$

$$L2 = \text{No. of contacts} \times 3.96 + 0.68$$

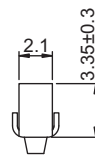
#### 2393T



A-A



B-B



Tolerances	
Linear	.X ± 0.38
	.XX ± 0.25

### Part numbering guide

2393 P

02

T

0

Series  
P = Housing  
T = Terminal

No. of contacts  
02 to 15  
leave blank for terminal

Contact plating  
T = Tin  
leave blank for housing

Option for 2393P  
0 = w/o ramp and rib  
1 = w/ ramp, w/o rib  
2 = w/ ramp and rib

\* standard

