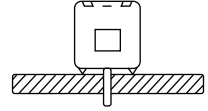
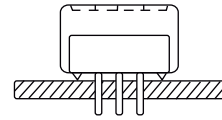


Specifications	
Contact rating	3 A @ 120 VAC or 28 VDC
Durability	10000 cycles at full load
Contact resistance	20 mΩ max. initial
Insulator resistance	1000 MΩ min.
Dielectrical withstanding	1000 VAC
Operation temperature	-30 °C to +85 °C
Materials	
Case	PBT with glass fiber, UL94V-0
Housing	POM / PA66, UL94V-HB
Actuator	Nylon PA66, UL94V-HB
Contact and terminal	Copper alloy, plating: see order code and table
Terminal seal	Epoxy



Part numbering guide

S **W** - **H** **2** **5** **1** **A** - **Q** - **3** **E** - **H**

Actuator Type	Switch Function	Terminal Pitch	Plating	Epoxy Seal	RoHS Code
H : High (2.80) F : Flush S : Side	251 SPDT on-none-on 253 SPDT on-off-on	A 2.54 B 5.08	Q silver R gold	(none) none seal 3E epoxy seal	H = RoHS Compliant

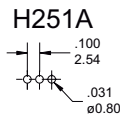
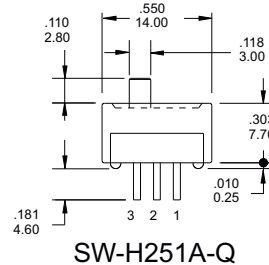
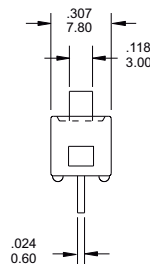
Contact material option

Code	Contact material	Terminal material	Rating
Q	Silver plated	Silver plated	3 A @ 120V AC or 28 V DC; 1 A @ 250 VAC
R	Gold plated over nickel plated	Gold plated over nickel plated	0.4VA MAX @ 20 V AC or DC MAX

SPDT



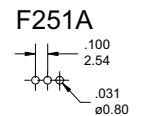
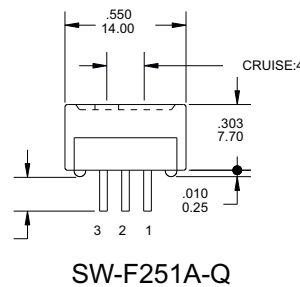
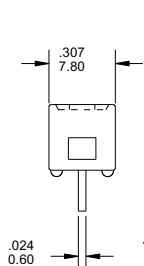
		Switching position		
Model No.	spacing			
H251A	2.54	ON	NONE	ON
H253A	2.54	ON	OFF	ON
H251B	5.08	ON	NONE	ON
H253B	5.08	ON	OFF	ON
Term. Comm.		2-3	open	2-1



SPDT



		Switching position		
Model No.	spacing			
F251A	2.54	ON	NONE	ON
F253A	2.54	ON	OFF	ON
F251B	5.08	ON	NONE	ON
F253B	5.08	ON	OFF	ON
Term. Comm.		2-3	open	2-1



SPDT



		Switching position		
Model No.	spacing			
S251A	2.54	ON	NONE	ON
S253A	2.54	ON	OFF	ON
S251B	5.08	ON	NONE	ON
S253B	5.08	ON	OFF	ON
Term. Comm.		2-3	open	2-1

