

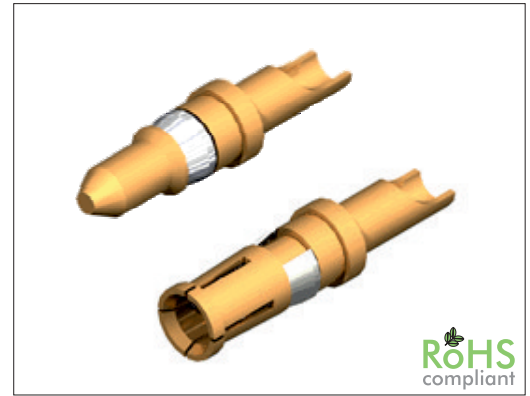
3117 Series

High Power Contact Solder Type for D-Sub 20/40 A

General specifications

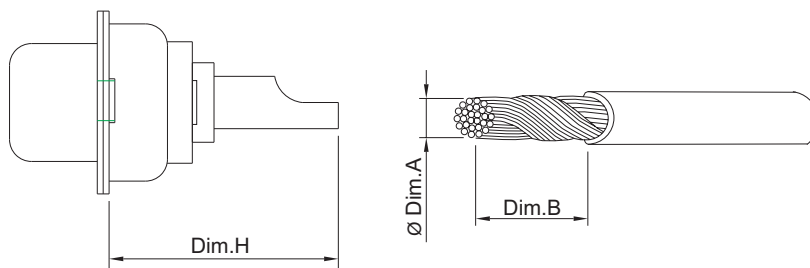
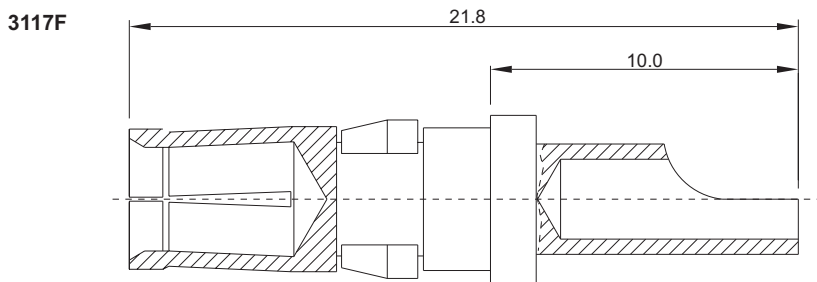
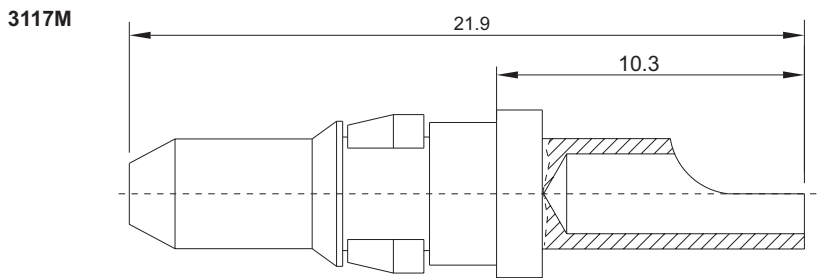
Lock link	Brass, plating: nickel
Contact material	Brass

Mating parts series



Mechanical dimensions

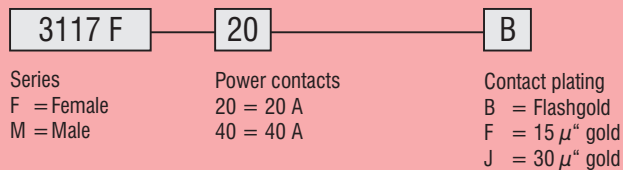
Unit: mm



Tolerances		
Linear	X	± 0.30
	XX	± 0.20
	XXX	± 0.10

Current rating	Terminations				Wire size
	Ø Dim.A min.	Ø Dim.A max.	Dim.B	Dim.H max.	
20 Amp	1.8	2.6	8.0	16.5	AWG 12~14
40 Amp	2.9	4.5	8.8	16.5	AWG 8~10

Part numbering guide



* standard

