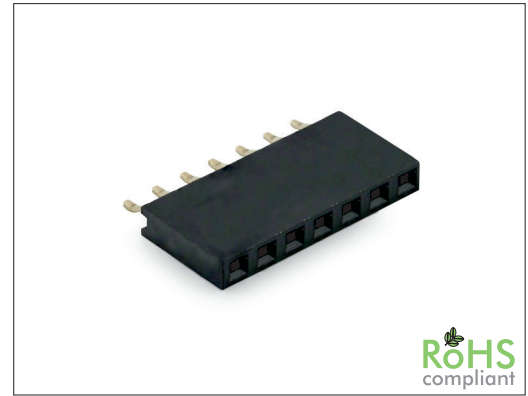


# 1660 Series

# 2.54 mm SMT Female Header Side Entry

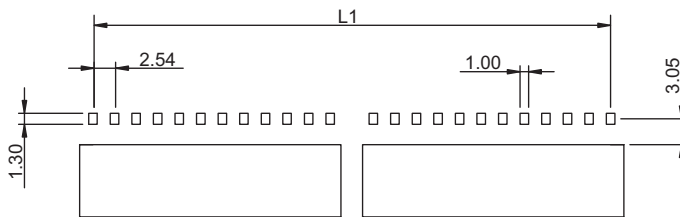
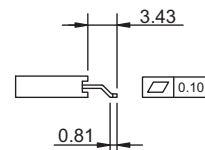
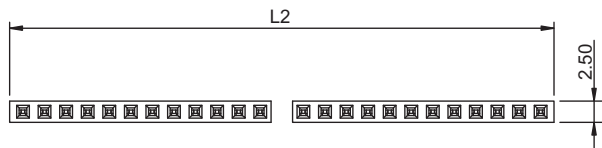
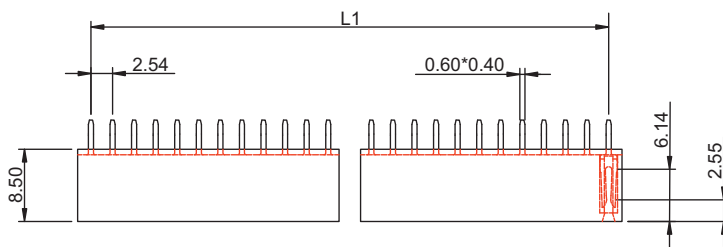
### General specifications

Insulator material	High temperature plastic, UL94V-0
Contact material	Copper alloy
Current rating	3 A
Contact resistance	20 mΩ max.
Insulator resistance	5000 MΩ min.
Dielectrical withstanding	1000 VAC for 1 min
Operating temperature	-40 °C to +105 °C
Soldering	JEDEC lead free reflow soldering process
<b>Mating parts series</b>	
1510, 1515, 1530, 1610, 1613, 1630	



### Mechanical dimensions

Unit: mm



Recommended P.C.B. layout

$$L1 = (\text{No. of contacts} \times 2.54) - 2.54$$

$$L2 = (\text{No. of contacts} \times 2.54) + 0.60$$

Tolerances		
Linear	X	± 0.30
	.XX	± 0.20

### Part numbering guide

<b>1660 H</b>	<b>02</b>	<b>B</b>	<b>R</b>
Series H = SMT horizontal	No. of contacts 02 to 40	Contact plating B = Flashgold E = 10 μ" gold F = 15 μ" gold J = 30 μ" gold	Packing R = Reel T = Tube

\* standard

