

6796X Series

Multiport RJ45 8P LED Side Entry Shielded

General specifications

Insulator material	Nylon PA46, UL94V-0
Contact material	Phosphor bronze, plating: gold over nickel
Current / voltage rating	1 A / 125 VAC
Contact resistance	50 mΩ max.
Insulator resistance	200 MΩ min.
Dielectrical withstanding	1000 VAC for 1 min
Durability	750 cycles
Operation temperature	-40 °C to +85 °C
Soldering	Lead free wave soldering process

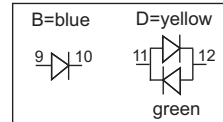
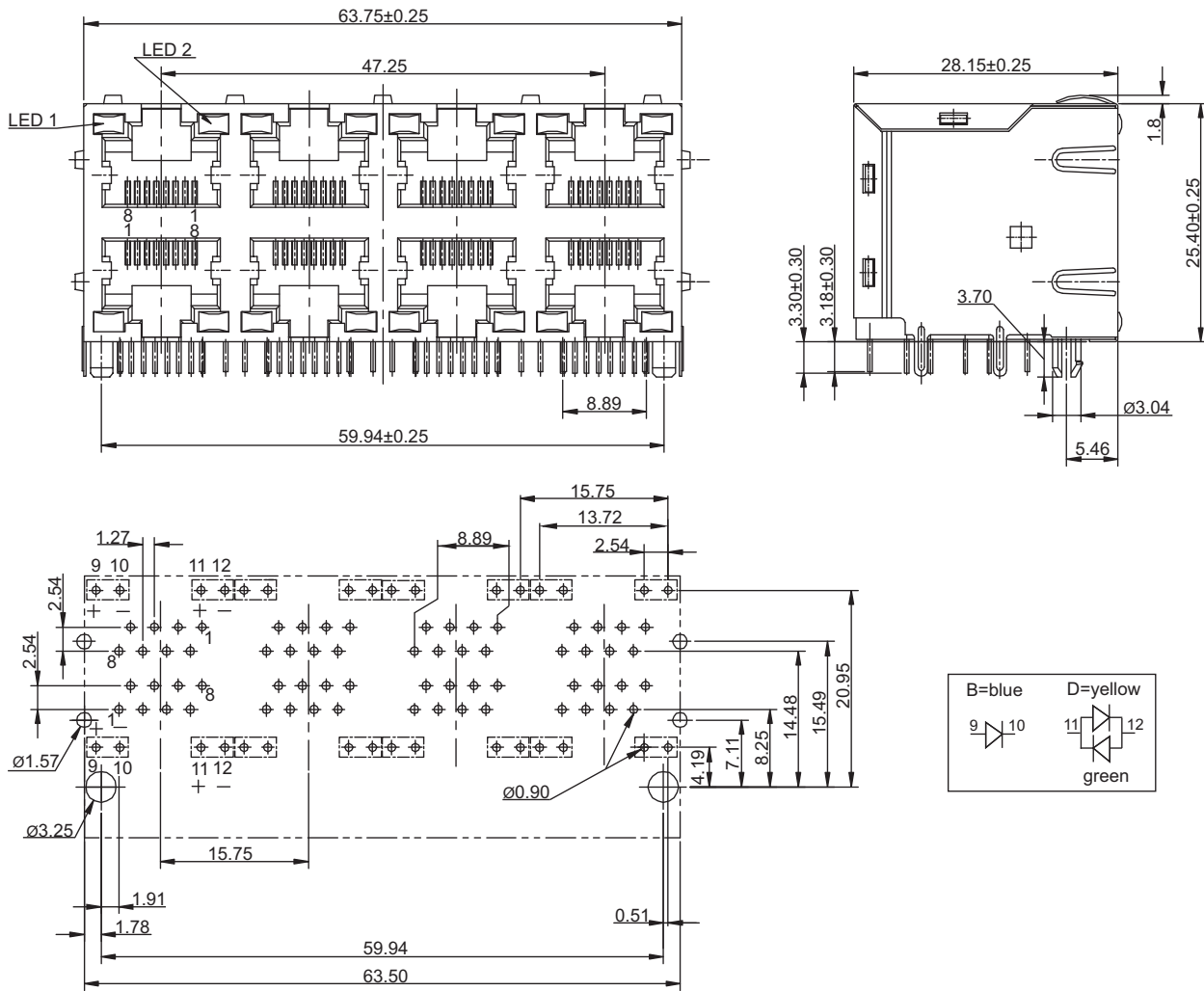
Mating parts series



RoHS
compliant

Mechanical dimensions

Unit: mm



Tolerances		
Linear	X	± 0.25
	XX	± 0.20
	XXX	± 0.10

Recommended
P.C.B. layout

continued on page 2

Part numbering guide

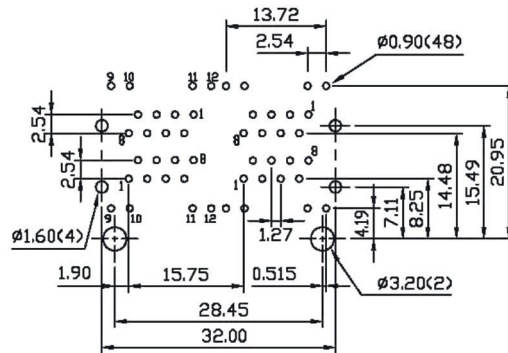
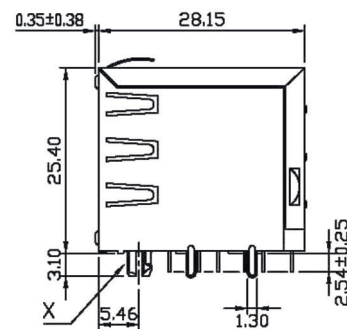
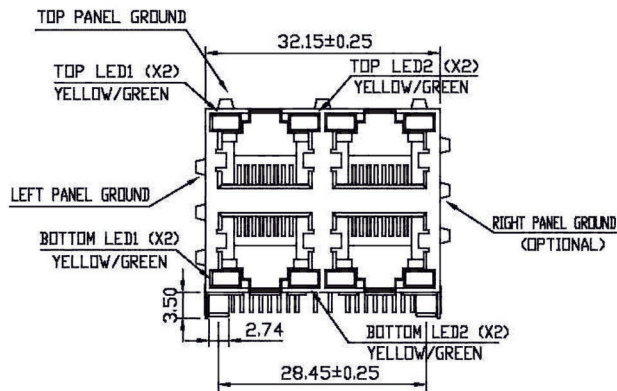
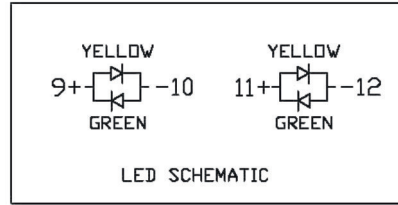
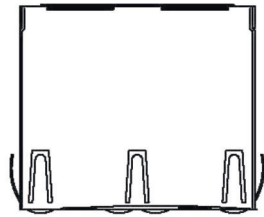
6796	B	C	G	Y
Series	Ports B = 2x2 D = 2x4	Contact plating C = 3 μ" gold K = 50 μ" gold D = 6 μ" gold F = 15 μ" gold J = 30 μ" gold	Color LED1 B = Blue D = Green/yellow G = Green O = Orange	Color LED2 R = Red Y = Yellow N = w/o LED

* standard



Mechanical dimensions

Unit: mm



Recommended P.C.B. layout

Tolerances

Linear	X	± 0.25
	.XX	± 0.20
	.XXX	± 0.10

