

1450 Series

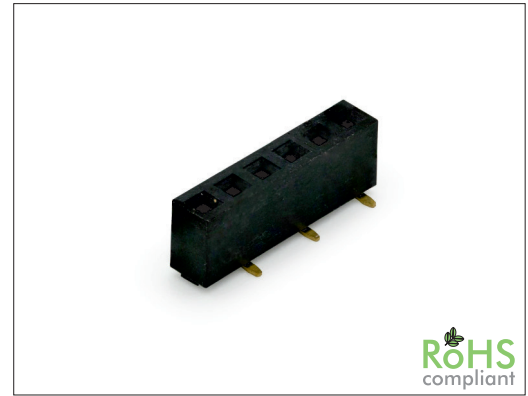
2.00 mm SMT Female Header

General specifications

Insulator material	Nylon-6T, UL94V-0, color: black
Contact material	Phosphor bronze
Current rating	2 A
Contact resistance	20 mΩ max.
Insulator resistance	3000 MΩ min.
Dielectrical withstanding	500 VAC for 1 min
Operating temperature	-40 °C to +105 °C
Soldering	JEDEC lead free reflow soldering process

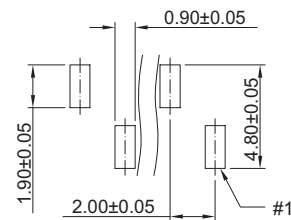
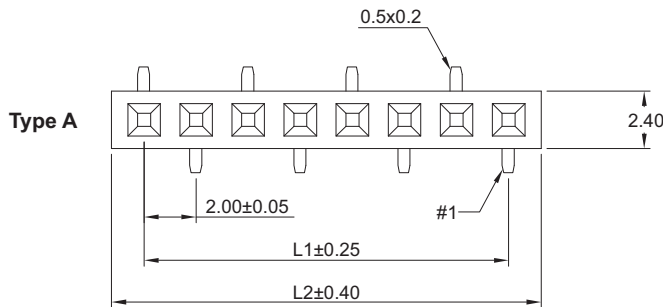
Mating parts series

1310, 1330, 1410, 1413, 1430

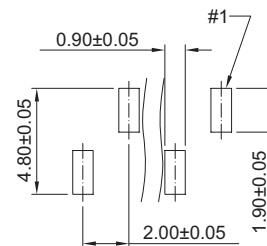
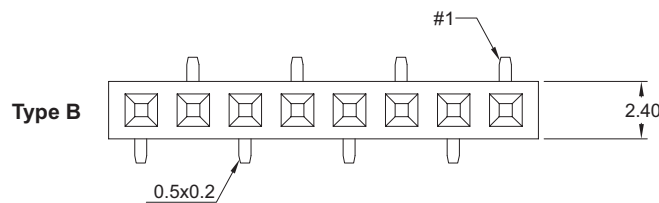


Mechanical dimensions

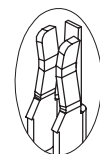
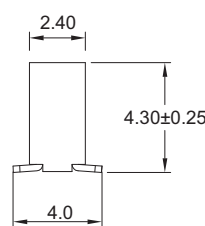
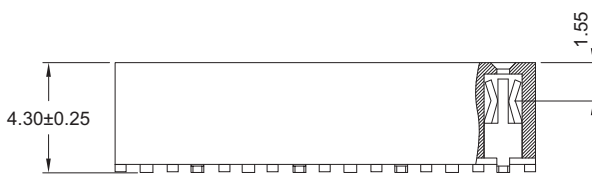
Unit: mm



Recommended P.C.B. layout



Recommended P.C.B. layout



Three side contact terminal

$$L1 = (\text{No. of contacts} - 1) \times 2.00$$

$$L2 = \text{No. of contacts} \times 2.00 + 0.50$$

Tolerances	
Linear	.X ± 0.35
	.XX ± 0.20

Part numbering guide

1450 V	03	B	A	R
Series V = SMT vertical	No. of contacts 03 to 40	Contact plating B = Flashgold E = 10 μ" gold F = 15 μ" gold J = 30 μ" gold	Position #1 A = Bottom Right B = Top right	Packing with pick & place pad R = Reel T = Tube

* standard

