

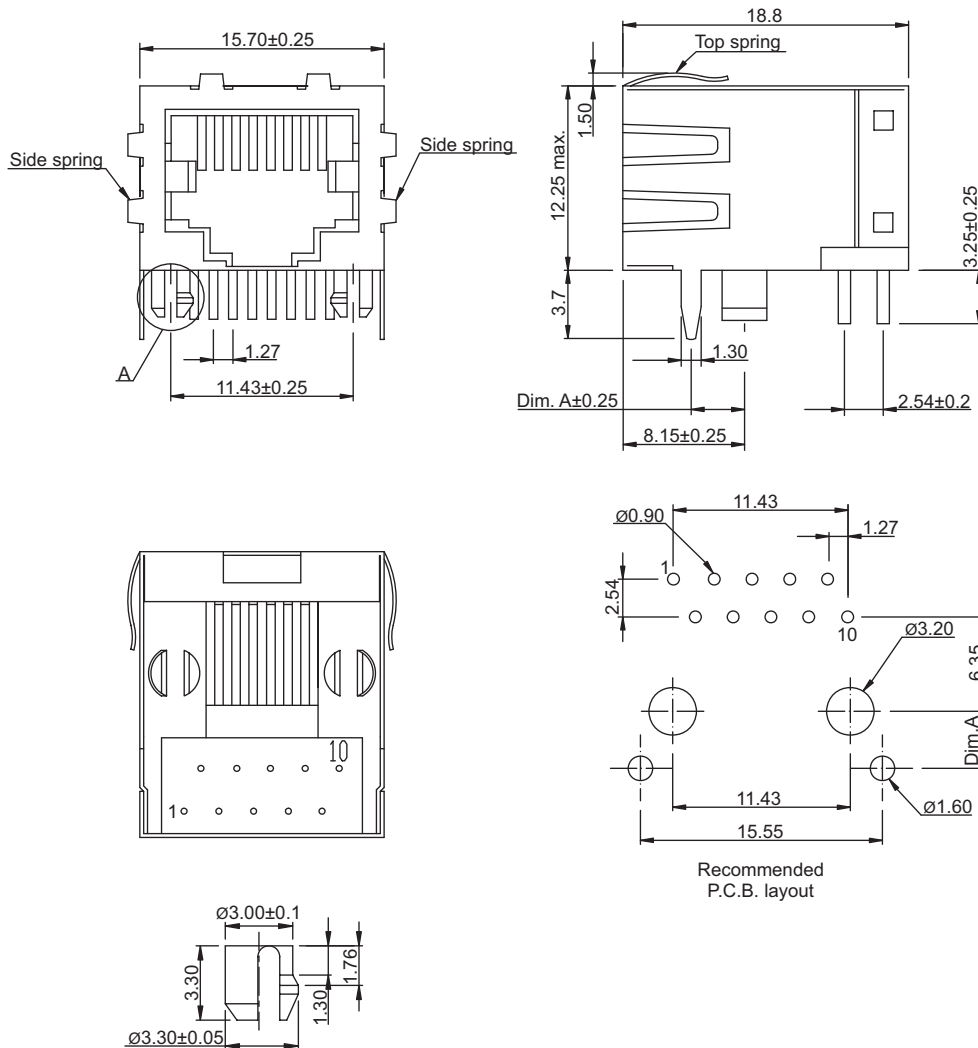
65341 Series RJ45 10P Side Entry Shielded

General specifications	
Insulator material	PBT w/ glass fiber, UL94V-0, color: black
Contact material	Phosphor bronze
Current rating	1.0 A
Voltage rating	150 VAC
Contact resistance	50 mΩ max.
Insulator resistance	200 MΩ min.
Dielectrical withstanding	1000 VAC for 1 min
Operating temperature	-40 °C to +85 °C
Soldering	Lead free wave soldering process
Durability	750 cycles
Mating parts series	



Mechanical dimensions

Unit: mm



Tolerances		
Linear	X	± 0.25
	.XX	± 0.13
	.XXX	± 0.05

Detail A

Part numbering guide

65341	C	8	0	0
Series	Contact plating C = 3 μ ^s gold K = 50 μ ^s gold D = 6 μ ^s gold F = 15 μ ^s gold J = 30 μ ^s gold	No. of contacts 8 = 8 1 = 10	Dim. A 0 = 3.05 mm 1 = 3.65 mm 2 = 4.57 mm	Ground springs 0 = w/o springs 1 = w/ top springs 2 = w/ side springs 3 = w/ top and side springs

* standard

