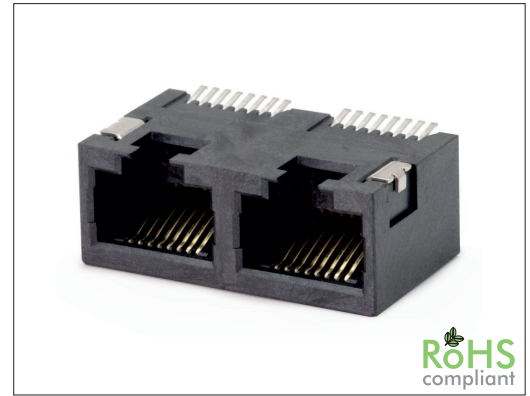


64632 Series SMD Dual RJ45 8P Side Entry

General specifications

Insulator material	LCP, UL94V-0, color: black
Contact material	Phosphor bronze, plating: gold
Current rating	1.5 A
Voltage rating	150 VAC
Contact resistance	20 mΩ max.
Insulator resistance	500 MΩ min. @ 500 VDC
Dielectrical withstanding	1000 VAC for 1 min
Operating temperature	-40 °C to +85 °C
Soldering	JEDEC lead free reflow soldering process
Durability	750 cycles

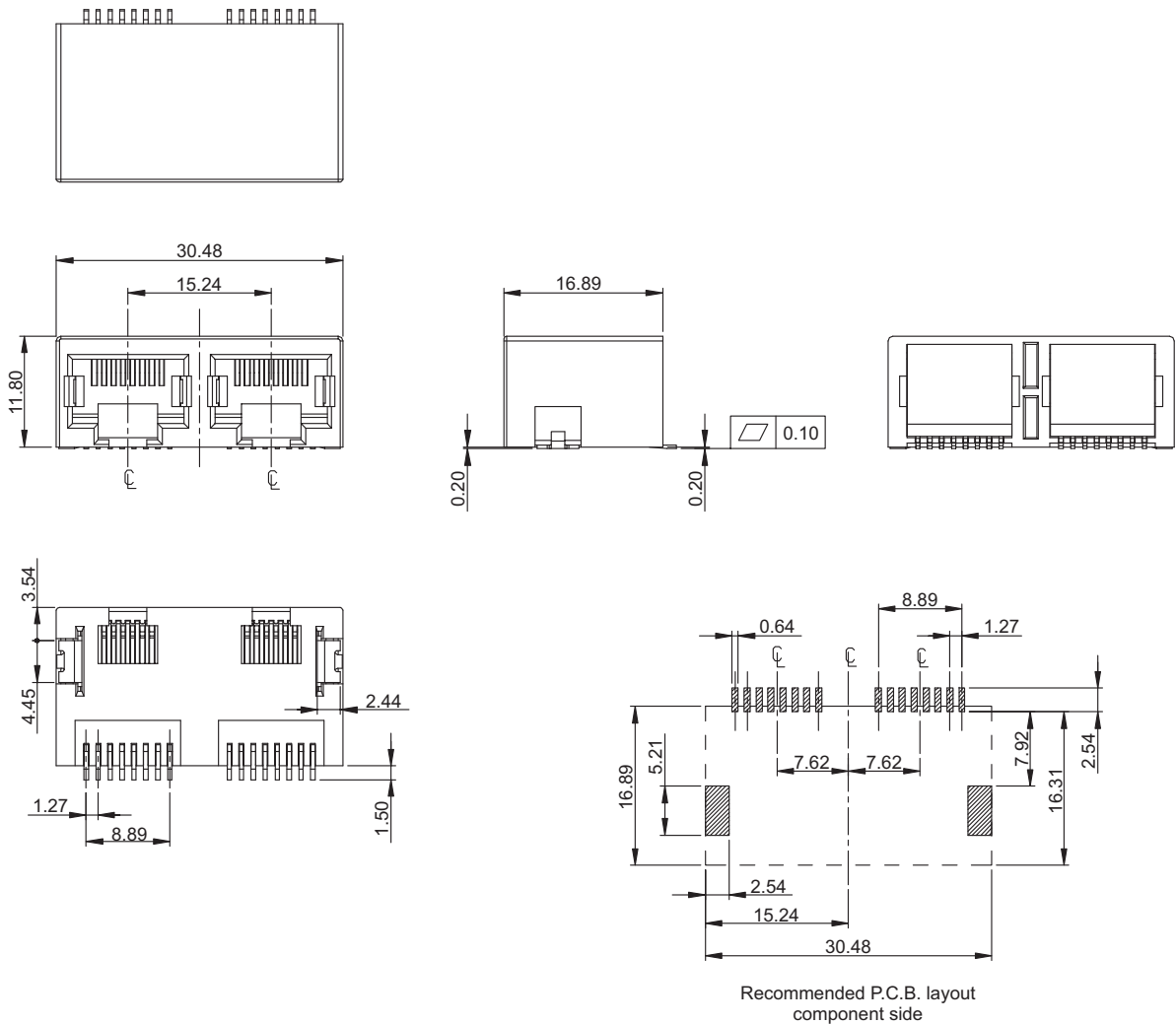
Mating parts series



RoHS
compliant

Mechanical dimensions

Unit: mm



Tolerances	
Linear	.X ± 0.20
	.XX ± 0.10

Part numbering guide

64632	B	8	R
Series	Contact plating B = Flashgold D = 6 μ" gold F = 15 μ" gold K = 50 μ" gold	No. of contacts 8	Packing R = Reel

* standard

