

1658 Series

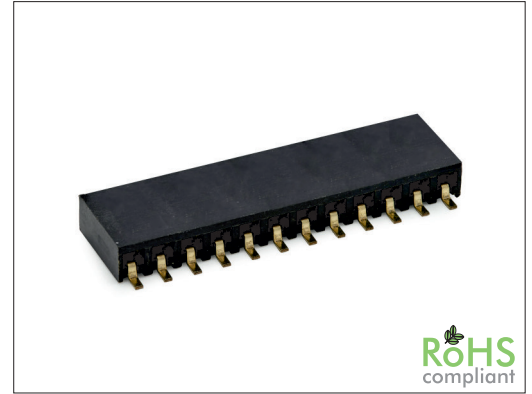
2.54 mm SMT Female Header Side Entry

General specifications

| | |
|---------------------------|--|
| Insulator material | Nylon 6T, UL94V-0 |
| Contact material | Phosphor bronze |
| Current rating | 3 A |
| Contact resistance | 20 mΩ max. |
| Insulator resistance | 5000 MΩ min. |
| Dielectrical withstanding | 1000 VAC for 1 min |
| Operating temperature | -40 °C to +105 °C |
| Soldering | JEDEC lead free reflow soldering process |

Mating parts series

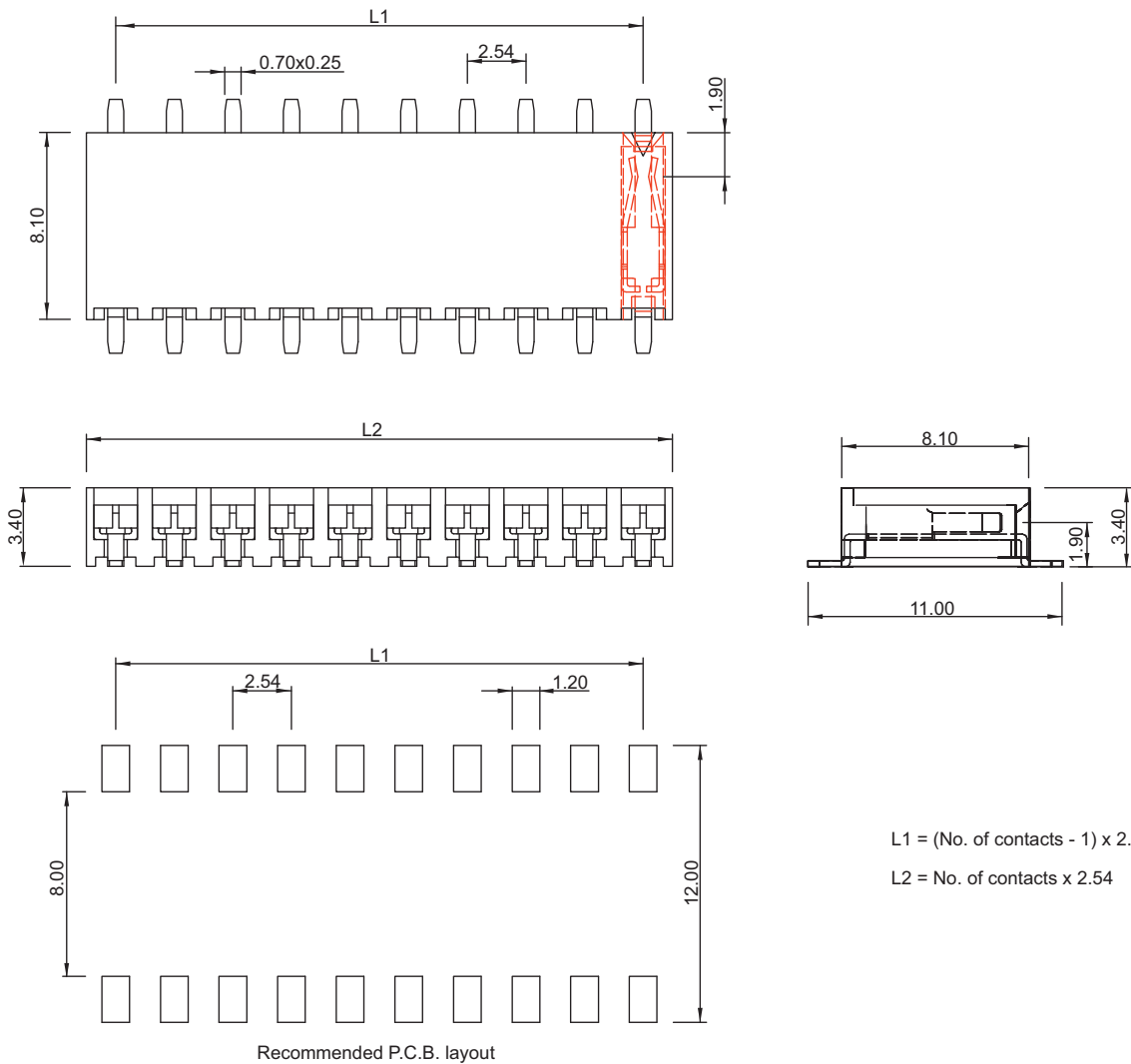
1613 (w/ peg only), 1614



RoHS
compliant

Mechanical dimensions

Unit: mm



$$L1 = (\text{No. of contacts} - 1) \times 2.54$$

$$L2 = \text{No. of contacts} \times 2.54$$

| Tolerances | | |
|------------|-----|--------|
| Linear | X | ± 0.30 |
| | .XX | ± 0.20 |

Part numbering guide

| | | | |
|------------------------------|-----------------------------|--|---------------------------------|
| 1658 H | 02 | B | R |
| Series H = SMT horizontal | No. of contacts 02 to 40 | Contact plating B = Flashgold E = 10 μ" gold F = 15 μ" gold J = 30 μ" gold | Packing R = Reel T = Tube |

* standard

