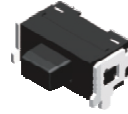


# SW-TCEP Series SMT Tactile Switch 1.65 x 3.80 mm Side Push Type Sealed

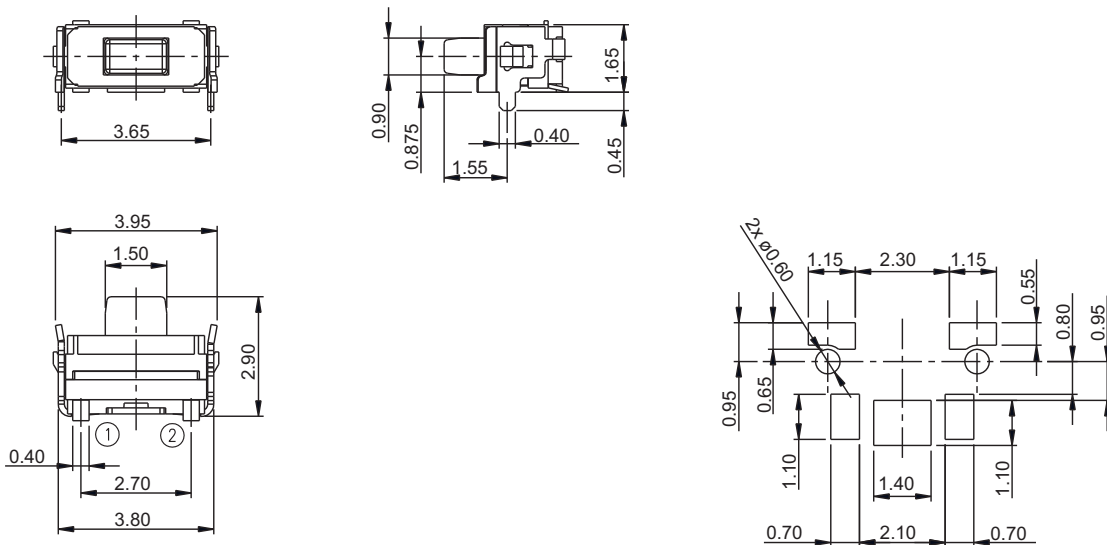
## General specifications

Housing material	High temperature plastic, UL94V-0, color: black
Actuator material	Rubber
Contact material	Stainless steel
Current rating	20 mA
Voltage rating	12 VDC
Contact resistance	100 mΩ max.
Insulator resistance	100 MΩ min. @ 100 VDC
Dielectrical withstanding	250 VAC for 1 min
Operating temperature	-40 °C to +85 °C
Operating force	160 ± 50 gf, stroke: 0.2 mm
Durability	100000
Soldering	JEDEC lead free reflow soldering process

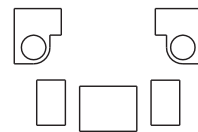


## Mechanical dimensions

Unit: mm



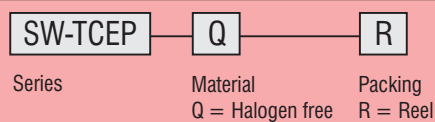
Recommended P.C.B. layout



Alternative P.C.B. layout

Tolerances	
Linear	± 0.20

## Part numbering guide



\* standard

