

5916 Series

AC Inlet Socket w/ Power Switch Snap In Type

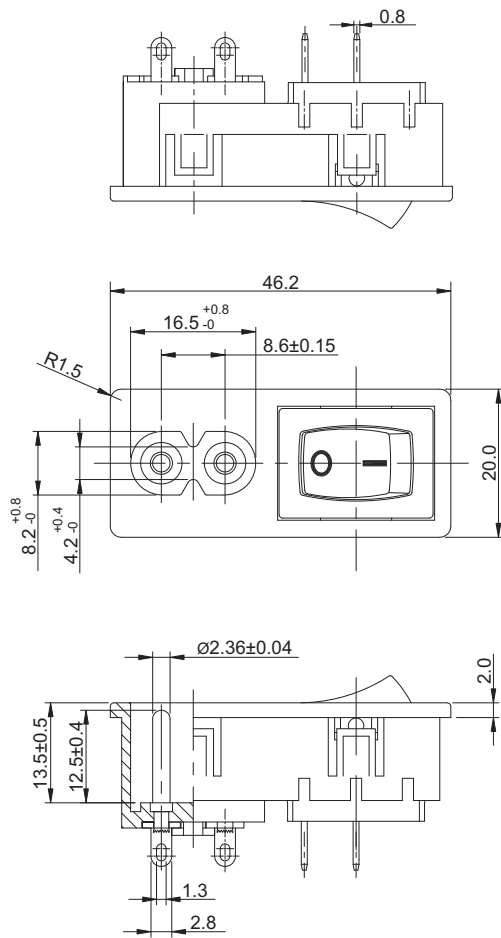
General specifications

Insulator material	Nylon 66, UL94V-2 to UL94V-0
Current rating	2.5 A
Voltage rating	250 VAC
Insulator resistance	100 MΩ min.
Dielectrical withstanding	2000 VAC for 1 min
Operation temperature	-25 °C to +85 °C
Soldering	Lead free wave soldering process
Mating parts series	

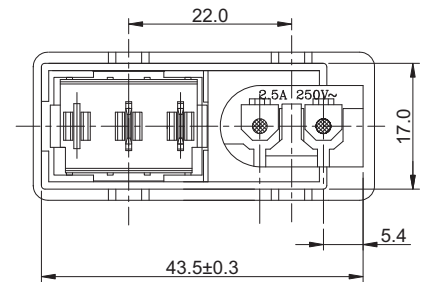


Mechanical dimensions

Unit: mm



Specification (switch)	
Current rating	6 A
Voltage rating	250 VAC
Contact resistance	30 mΩ max.
Insulation resistance	100 MΩ min.
Withstanding voltage	1000 VAC for 1 min
Durability	10000 cycles



Tolerances	
Linear	XX.XX ± 0.20
	X.XX ± 0.10

Part numbering guide

5916 A — V0

Series

Material

V0 = UL94V-0

V1 = UL94V-1

V2 = UL94V-2

* standard

