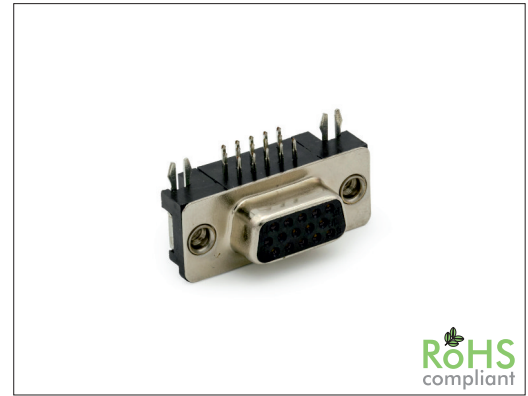


3042 Series

HD D-Sub Female Right Angle, Height: 5.08 mm

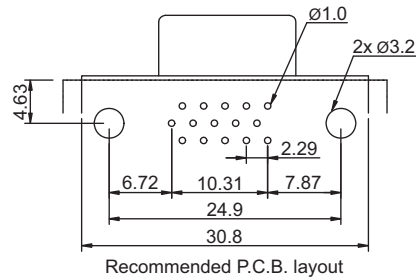
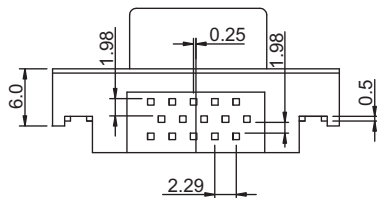
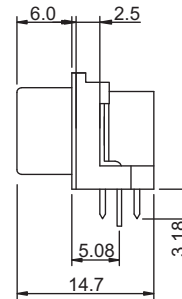
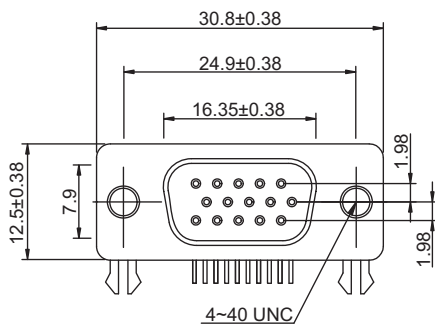
General specifications

Insulator material	PBT w/ 30% glass fiber, UL94V-0
Contact material	Brass, metal shell: steel
Current rating	5 A
Contact resistance	30 mΩ max.
Insulator resistance	1000 MΩ min. @ 500 VDC
Dielectrical withstanding	500 VAC for 1 min
Operating temperature	-55 °C to +105 °C
Soldering	JEDEC lead free wave soldering process
Mating parts series	



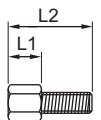
Mechanical dimensions

Unit: mm



Ordercode for screws UNC4-40 only

Ordercode	L1	L2
3099U1	4.8	11.8
3099U9	5.8	12.0



Tolerances		
Linear	X	± 0.25
	.XX	± 0.10

Part numbering guide

3042 F	15	B	BK
Series F = Female	No. of contacts 15	Contact plating B = Flashgold* E = 10μ" gold F = 15μ" gold J = 30μ" gold	Color BK = Black BU = Blue

* standard

