

1985 Series

3.50 mm SMT Board to Board (LED Stripe)

General specifications

Insulator material	High temperature plastic, UL94V-0
Contact material	Phosphor bronze
Current rating	3 A
Voltage rating	250 VAC
Contact resistance	20 mΩ max.
Insulator resistance	1000 MΩ min.
Dielectrical withstanding	1500 VAC for 1 min
Operating temperature	-25 °C to +85 °C
Soldering	JEDEC lead free reflow soldering process

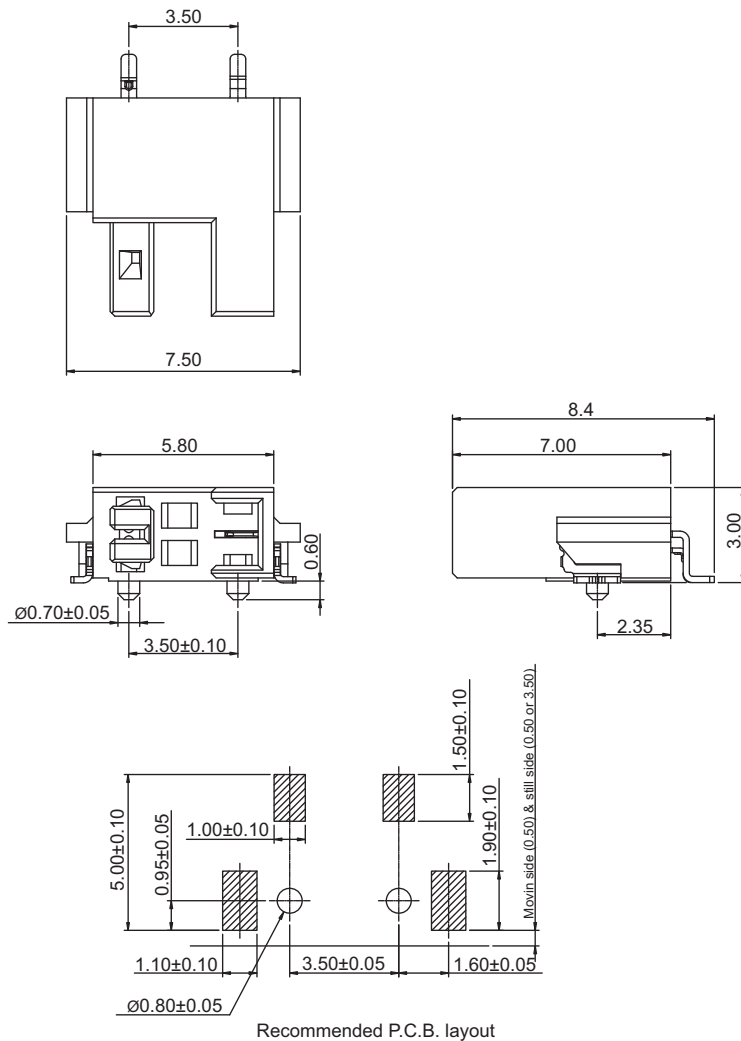
Mating parts series

1985PS



Mechanical dimensions

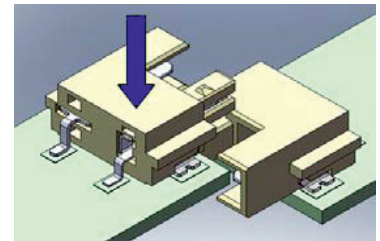
Unit: mm



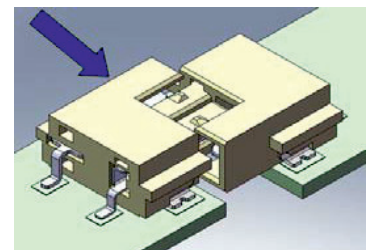
How to mate two parts of it together:

Solution A:

1. move pcb down

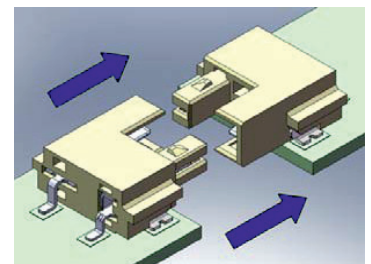


2. move it to side



Solution B:

push it horizontally in



Tolerances	
Linear	X ± 0.30
	.XX ± 0.20

Part numbering guide

1985 PS	02	T	R
Series	No. of contacts 02	Contact plating T = Tin	Packing R = Reel

* standard

