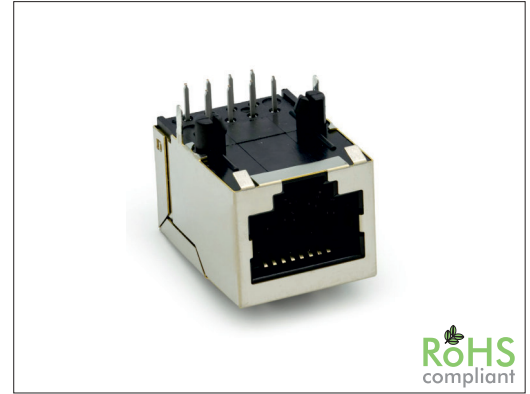


64342 Series RJ45 8P Side Entry CAT.5 Shielded

General specifications

Insulator material	PA66 w/ 30% glass fiber , UL94V-0, color: black
Contact material	Phosphor bronze
Current rating	1.5 A
Voltage rating	125 VAC
Contact resistance	20 mΩ max.
Insulator resistance	1000 MΩ min.
Dielectrical withstanding	750 VAC for 1 min
Operating temperature	-40 °C to +85 °C
Soldering	Lead free wave soldering process
Durability	750 cycles

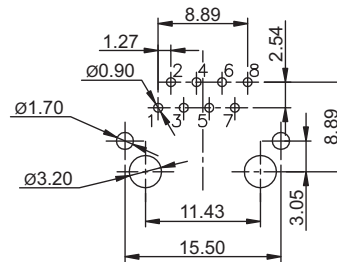
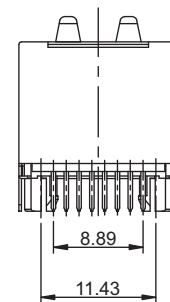
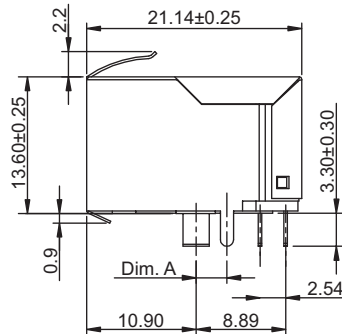
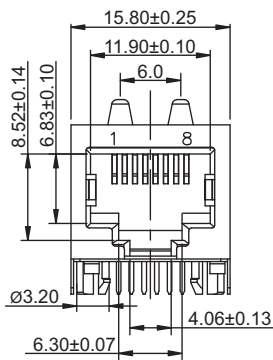
Mating parts series



RoHS
compliant

Mechanical dimensions

Unit: mm



Recommended P.C.B. layout
component side, tolerances: ±0.05

Tolerances

Linear	X	± 0.25
	.XX	± 0.15
	.XXX	± 0.10

Part numbering guide

64342	D	C	0
Series	Contact plating D = 6 μ" gold* F = 15 μ" gold J = 30 μ" gold	Dim. A C = 3.05 mm	Ground springs 0 = w/o springs 1 = w/ top springs 2 = w/ side springs 3 = w/ top and side springs

* standard

