

SW-NPM Series SMT DIP Switch Piano Type 2.54 mm

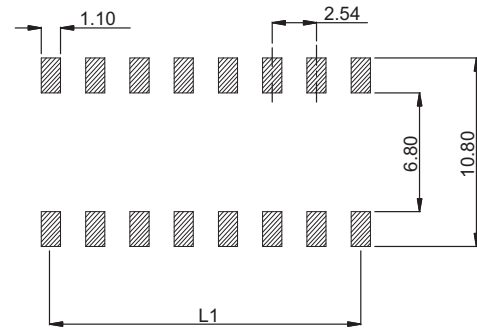
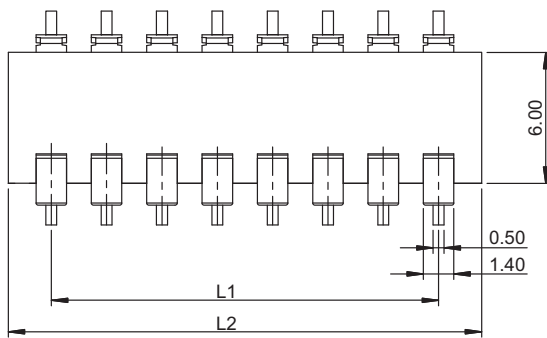
General specifications

| | |
|---------------------------|--|
| Housing material | Nylon, UL94V-0, color: black |
| Actuator material | LCP, UL94V-0, color: white |
| Contact material | Copper alloy, plating: gold |
| Current rating | 25 mA (switching), 100 mA (non-switching) |
| Voltage rating | 24 VDC (switching), 50 VDC (non-switching) |
| Contact resistance | 100 mΩ max. |
| Insulator resistance | 100 MΩ min. @ 500 VDC |
| Dielectrical withstanding | 500 VAC for 1 min |
| Operating temperature | -20 °C to +85 °C |
| Operating force | 800 gf max. |
| Durability | 2000 cycles |
| Soldering | JEDEC lead free reflow soldering process |

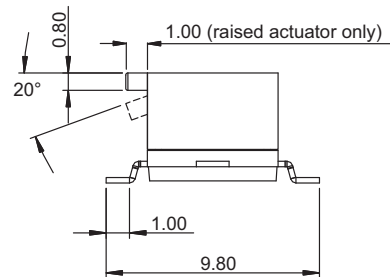
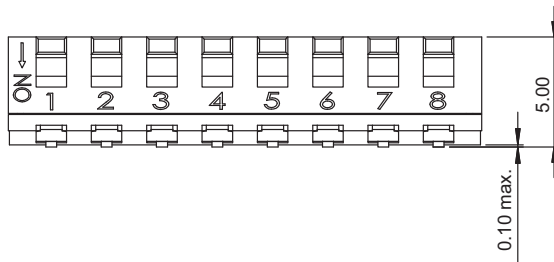


Mechanical dimensions

Unit: mm



Recommended P.C.B. layout



L1 = No. of positions x 2.54 - 2.54
L2 = No. of positions x 2.54 + 1.40

| Tolerances | |
|------------|--------|
| Linear | ± 0.20 |

Part numbering guide

| | | | | | |
|--|--|--|---|----------------------|---|
| SW-NPM | 02 | □ | T | V | TR |
| Series (actuator) SW-NPM = raised SW-NPMR = recessed | No. of positions 02, 04, 06, 08, 10 | Switch direction F = Up „ON“ (leave blank for down „ON“) | Optional tape sealed T = Top tape sealed* (recessed actuator only) (leave blank for not tape sealed) | Material V = RoHS | Packing TR = Reel* (leave blank for tube) |

* standard

