

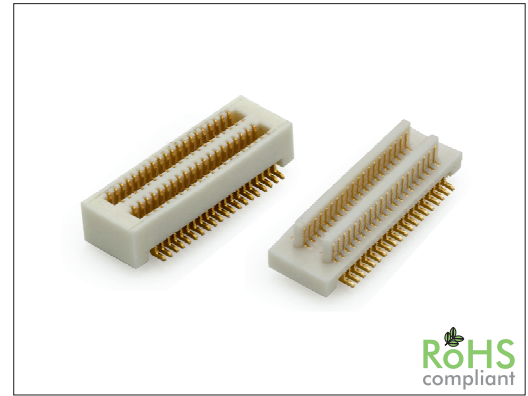
1060 Series

0.50 mm Micro Board to Board

General specifications

Insulator material	Nylon 46, UL94V-0, color: white
Contact material	Phosphor bronze
Current rating	0.5 A
Voltage rating	50 V AC/DC
Contact resistance	30 mΩ max.
Insulator resistance	100 MΩ @ 100 VDC
Dielectrical withstanding	100 VAC for 1 min
Operating temperature	-20 °C to +105 °C
Soldering	JEDEC lead free reflow soldering process

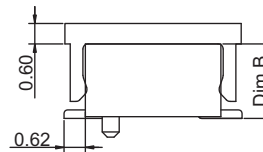
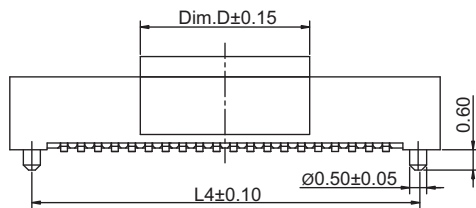
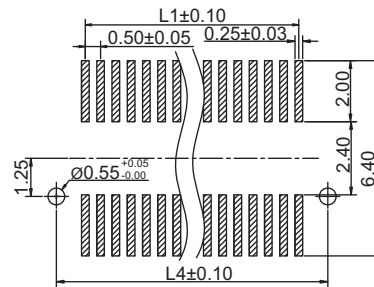
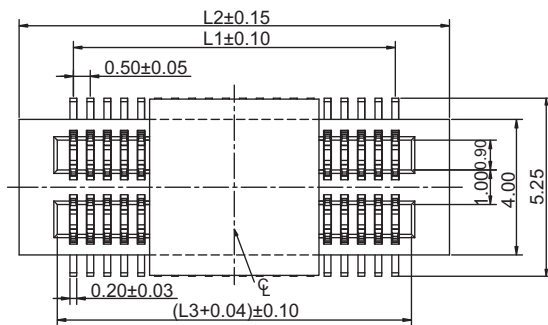
Mating parts series



Mechanical dimensions

Unit: mm

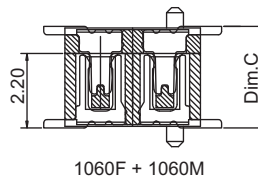
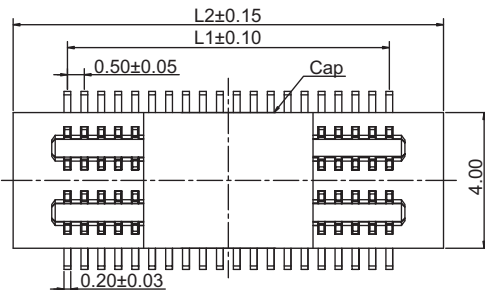
1060F



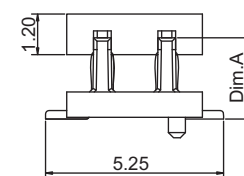
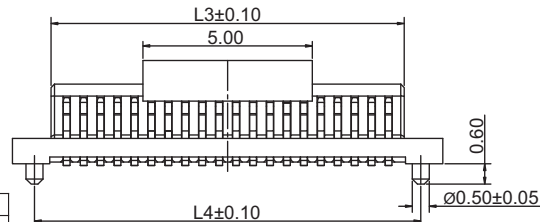
Recommended P.C.B. layout 1060F and 1060M

Dim.D	Applicable to
5.00	10 to 48 pin
12.00	50 to 120 pin

1060M



Mating height variations		
1060M Dim. A	1060F Dim. B	Mating height Dim. C
2.40	2.20	3.00
2.90	2.20	3.50
2.90	2.70	4.00
2.90	3.20	4.50
3.90	3.00	5.00
4.40	3.00	5.50
4.40	3.50	6.00



$$L1 = \left(\frac{\text{No. of contacts} - 1}{2} \right) \times 0.50$$

$$L2 = L1 + 3.20$$

$$L3 = L1 + 0.92$$

$$L4 = L1 + 1.90$$

Tolerances	
Linear	X ± 0.20
	.XX ± 0.15

Part numbering guide

1060 F	10	B	240	R
Series F = SMT female M = SMT male	No. of contacts 10 to 50 60, 70, 80, 90, 100, 120	Contact plating B = Flashgold	1060M Dim. A 240 = 2.40 mm 290 = 2.90 mm 390 = 3.90 mm 440 = 4.40 mm	1060F Dim. B 220 = 2.20 mm 270 = 2.70 mm 300 = 3.00 mm 320 = 3.20 mm
				350 = 3.50 mm Packing R = Reel

* standard

