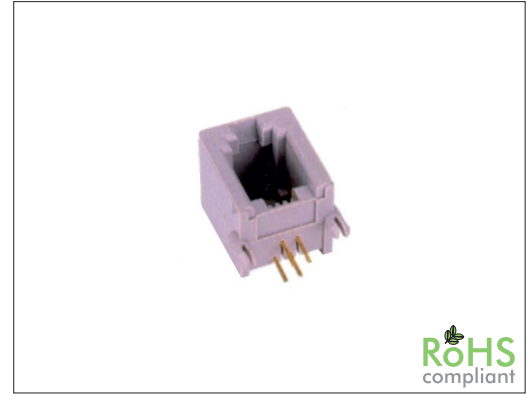


61311 Series RJ10 4P Side Entry

General specifications

| | |
|---------------------------|--|
| Insulator material | PBT w/ glass fiber, UL94V-0, color: grey |
| Contact material | Phosphor bronze |
| Current rating | 1 A |
| Voltage rating | 150 VAC |
| Contact resistance | 50 mΩ max. |
| Insulator resistance | 200 MΩ min. |
| Dielectrical withstanding | 1000 VAC for 1 min |
| Operating temperature | -40 °C to +85 °C |
| Soldering | Lead free wave soldering process |
| Durability | 750 cycles |

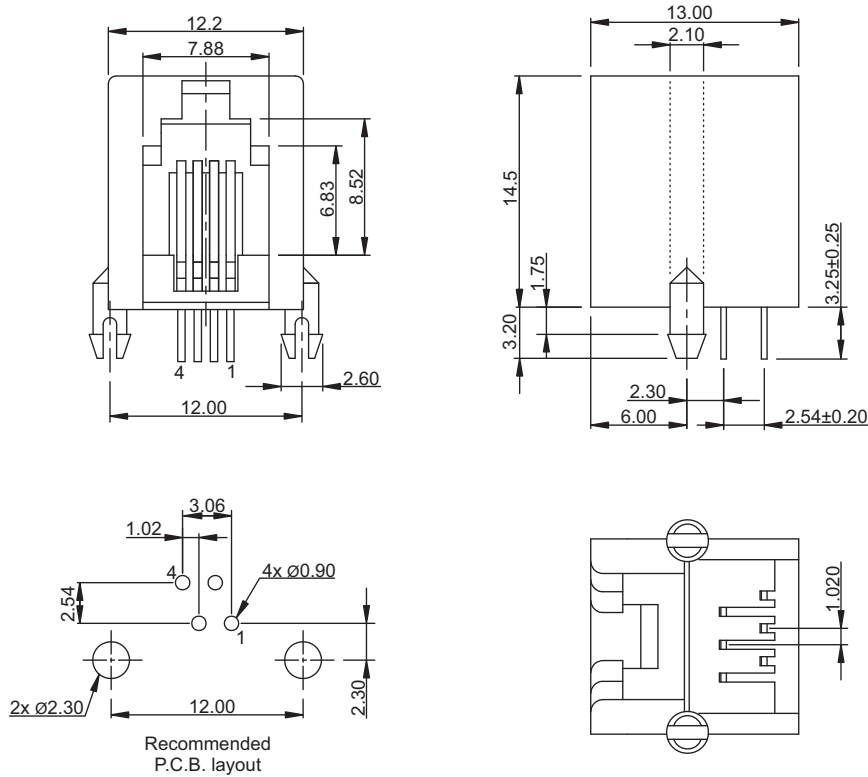
Mating parts series



RoHS
compliant

Mechanical dimensions

Unit: mm



| Tolerances | | |
|------------|------|--------|
| Linear | X | ± 0.25 |
| | .XX | ± 0.13 |
| | .XXX | ± 0.05 |

Part numbering guide

61311 C

Series

Contact plating

C = 3 μ" gold K = 50 μ" gold

D = 6 μ" gold

F = 15 μ" gold

J = 30 μ" gold

* standard

