

2212 Series

2.00 mm P/PD Housing and Terminal

General specifications

Insulator material	Nylon 66, UL94V-0, color: black
Contact material	Phosphor bronze, plating: gold
Current rating	2 A
Voltage rating	250 V AC/DC
Contact resistance	20 mΩ max.
Insulator resistance	1000 MΩ min.
Dielectrical withstanding	800 VAC for 1 min
Operating temperature	-25 °C to +85 °C

Mating parts series

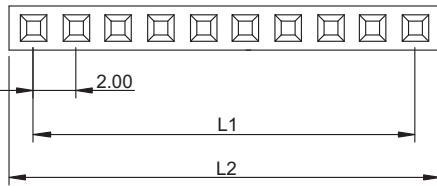
all 2.00 mm pin headers series 13xx and 14xx



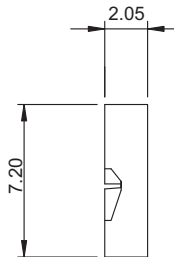
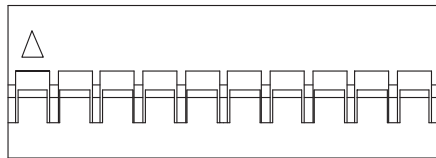
Mechanical dimensions

Unit: mm

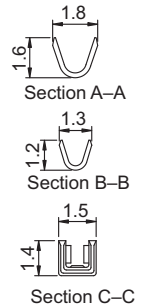
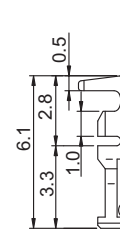
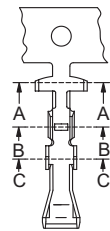
2212P



L1 = No. of contacts x 2.00 - 2.00
L2 = No. of contacts x 2.00 + 0.30

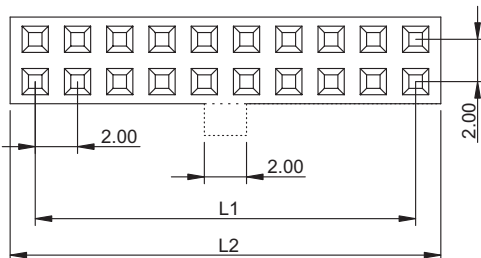


2212T

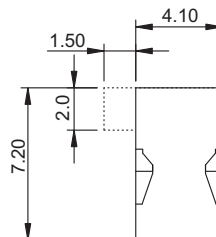
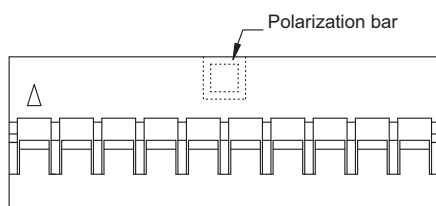


Wire range: AWG 26 to 30

2212PD



L1 = No. of contacts - 2.00
L2 = L1 + 2.20



Tolerances		
Linear	X	± 0.38
	.XX	± 0.25

Part numbering guide

2212 P — 02 — 0

Series
P = Housing single row
PD = Housing dual row
T = Terminal

No. of contacts
1-row = 02 to 30
2-row = 04 to 60
(leave blank for terminal)

Polarization bar
0 = w/o bar
1 = w/ bar (2210PD only)
(leave blank for terminal)

* standard

