

# 1490 Series

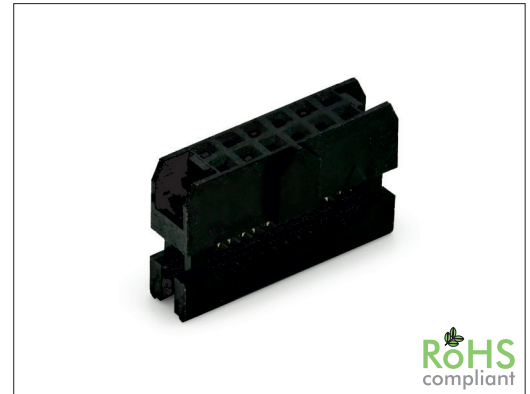
# 2.00 mm IDC Female Header

### General specifications

Insulator material	PBT w/ 30% glass fiber, UL94V-0, color: black
Contact material	Phosphor bronze
Current rating	1 A
Contact resistance	30 mΩ max.
Insulator resistance	1000 MΩ min.
Dielectrical withstanding	500 VAC for 1 min
Operating temperature	-40 °C to +105 °C

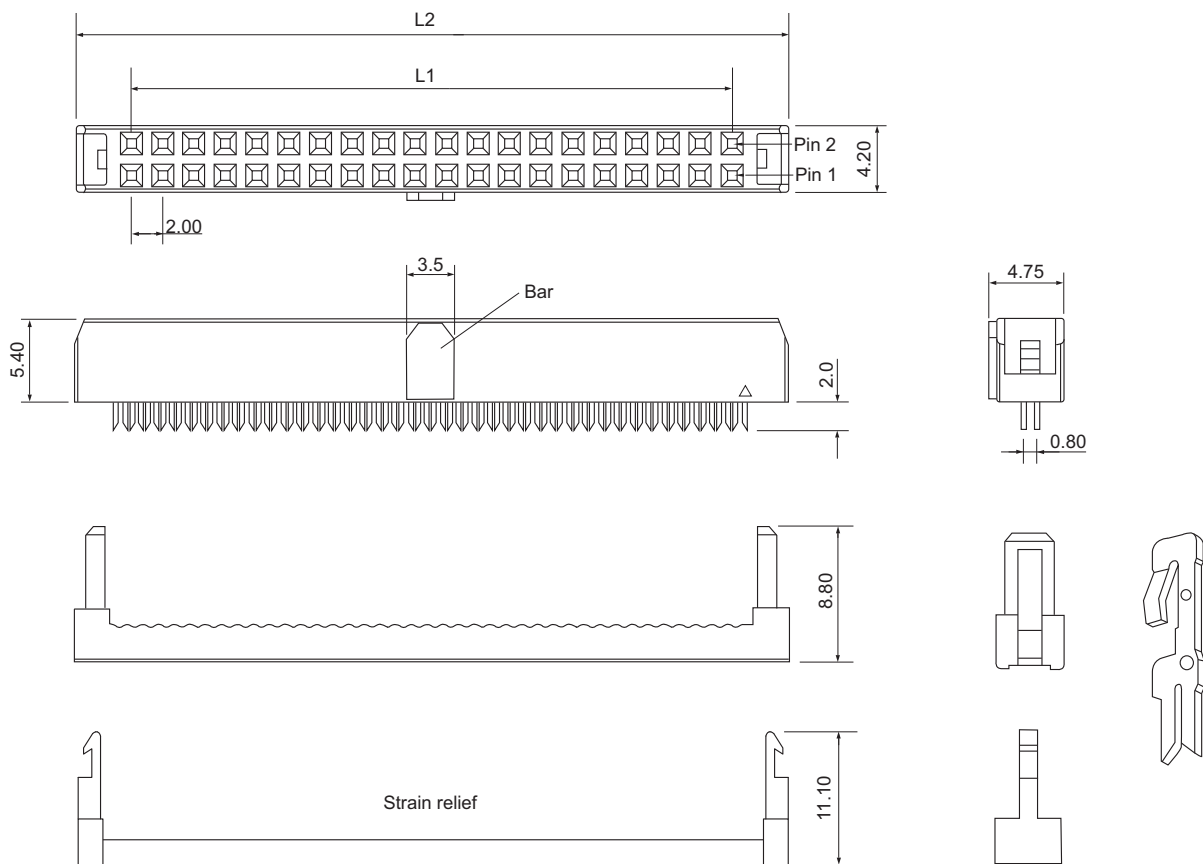
### Mating parts series

1340, 1342, 1346, 1348, 1440, 1441, 1442, 1445, 1446



### Mechanical dimensions

Unit: mm



$$L1 = \left( \frac{\text{No. of contacts}}{2} - 1 \right) \times 2.00$$

$$L2 = \left( \frac{\text{No. of contacts}}{2} \right) \times 2.00 + 5.10$$

Tolerances	
Linear	X ± 0.38
	.XX ± 0.25

### Part numbering guide

<b>1490 I</b>	<b>10</b>	<b>M</b>	<b>A</b>
Series I = IDC female	No. of contacts 10 to 26, 30, 34, 40, 44, 50	Contact plating M = Tin / flashgold* B = Flashgold	Strain relief A = w/ strain relief B = w/o strain relief

\* standard

