

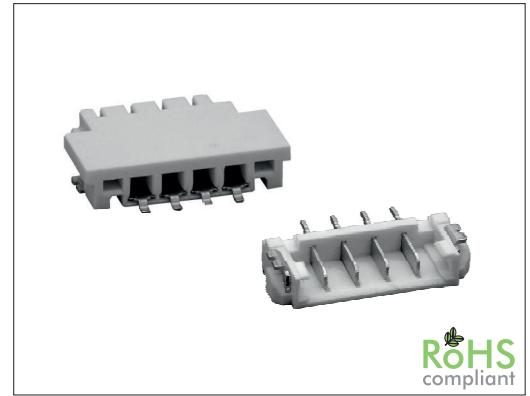
# 1980 Series

# 1.50 mm SMT Board to Board

## General specifications

Insulator material	High temperature plastic, UL94V-0, color: white
Contact material	Phosphor bronze
Current rating	1 A
Voltage rating	150 VAC
Contact resistance	20 mΩ max.
Insulator resistance	1000 MΩ min.
Dielectrical withstanding	1300 VAC for 1 min
Operating temperature	-25 °C to +85 °C
Soldering	JEDEC lead free reflow soldering process

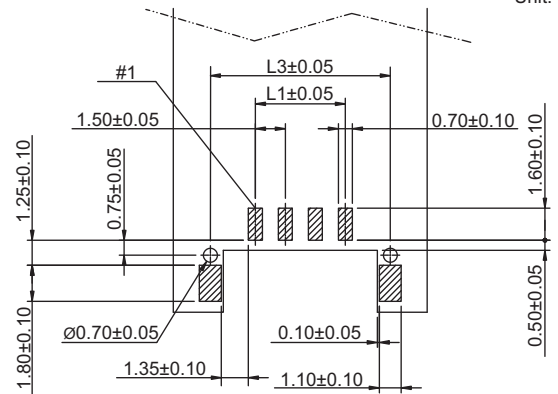
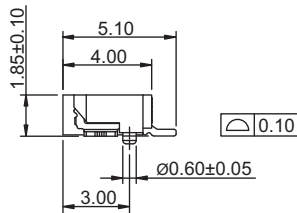
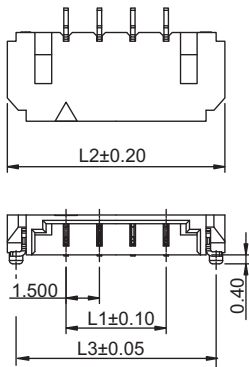
## Mating parts series



## Mechanical dimensions

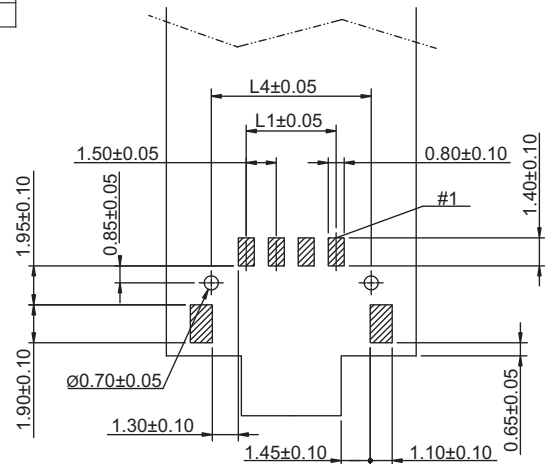
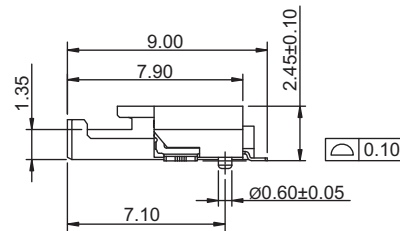
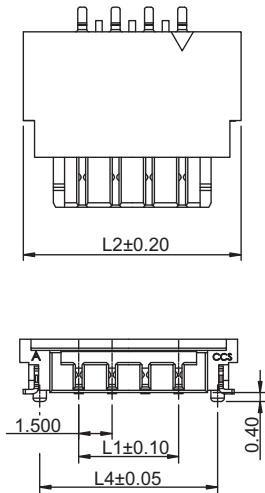
Unit: mm

### 1980P



Recommended P.C.B. layout

### 1980S

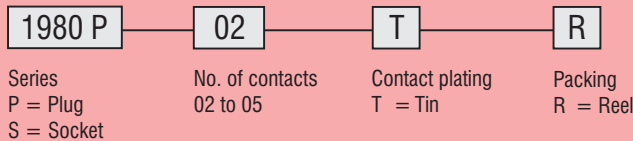


Recommended P.C.B. layout

Dimensions				
No. of contacts	L1	L2	L3	L4
02	1.50	6.80	6.00	5.00
03	3.00	8.30	7.50	6.50
04	4.50	9.80	9.00	8.00
05	6.00	11.30	10.50	9.50

Tolerances		
Linear	X	± 0.30
	.XX	± 0.20

## Part numbering guide



\* standard

