

3920 Series

SMT IEEE1394 6 Pin

General specifications

Insulator material	LCP w/ 30% glass fiber, UL94V-0
Contact material	Brass
Current rating	1.5 A
Voltage rating	40 V AC/DC
Contact resistance	50 mΩ max.
Insulator resistance	100 MΩ min.
Dielectrical withstanding	500 VAC for 1 min
Operating temperature	-55 °C to +85 °C
Soldering	JEDEC lead free reflow soldering process
Durability	1500 cycles

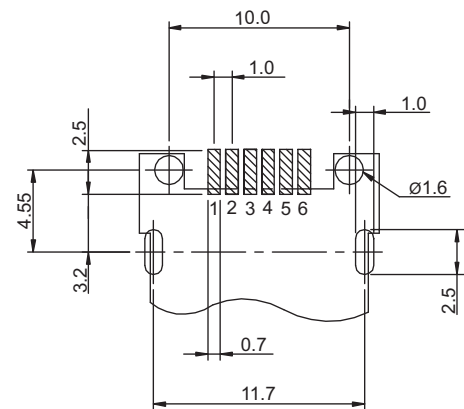
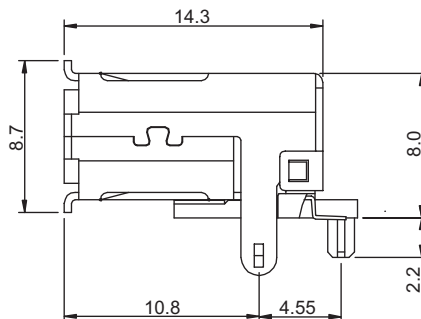
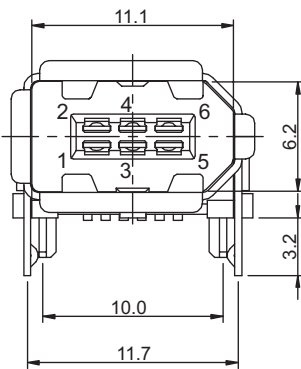
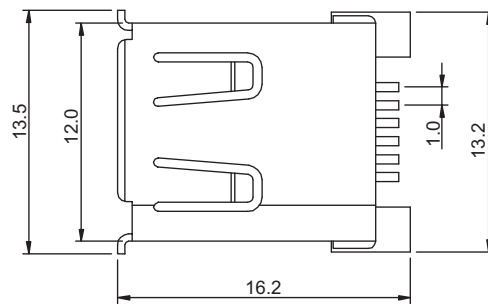
Mating parts series



RoHS
compliant

Mechanical dimensions

Unit: mm



Recommended
P.C.B. layout

Tolerances

Linear	X	± 0.38
	.XX	± 0.25
	.XXX	± 0.13

Part numbering guide

3920 H — **J** — **B** — **R**

Series

H = SMT horizontal

Contact plating

J = 30 μ" gold

Color

B = Black

Packing

R = Reel

Y = Tray

* standard

