

# 1489 Series

# 2.00 mm IDC Female Header w/ Strain Relief w/ Latches

## General specifications

Insulator material	PBT w/ 30% glass fiber, UL94V-0
Contact material	Phosphor bronze
Current rating	1 A
Contact resistance	30 mΩ max.
Insulator resistance	1000 MΩ min.
Dielectrical withstanding	500 VAC for 1 min
Operating temperature	-40 °C to +105 °C

## Mating parts series

1340, 1346, 1348, 1440, 1441, 1442

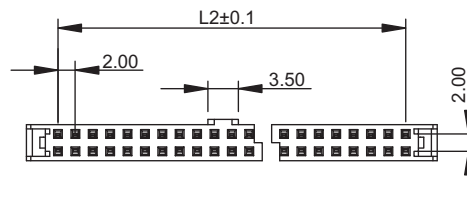
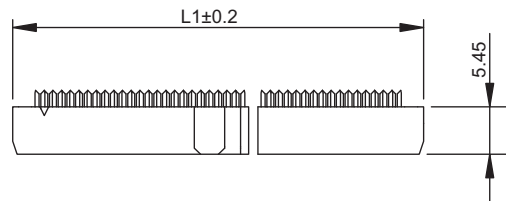
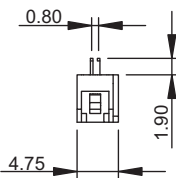
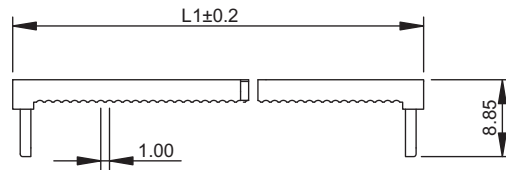
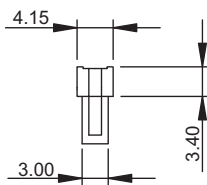
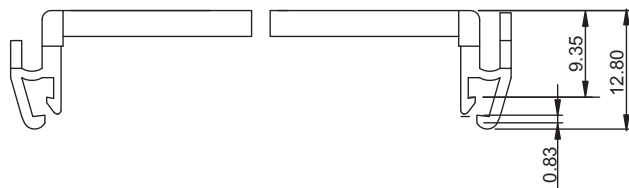
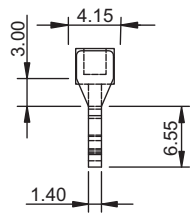


RoHS  
compliant

## Mechanical dimensions

Unit: mm

### Strain relief w/ side latches



$$L1 = \left( \frac{2.0 * \text{No. of Contacts}}{2} \right) + 5.25$$

$$L2 = \left( \frac{2.0 * \text{No. of Contacts}}{2} \right) - 2.0$$

### Tolerances

Linear	X	± 0.30
	.XX	± 0.20
	.XXX	± 0.10

## Part numbering guide

<b>1489 I</b>	<b>10</b>	<b>M</b>	<b>A</b>	<b>BK</b>
Series I = IDC female	No. of contacts 10 to 16, 20 to 26, 30, 32, 34, 40, 44, 50, 60	Contact plating M = Tin / flashgold* J = 30 μ" gold B = Flashgold E = 10 μ" gold F = 15 μ" gold	Strain relief w/ latches A = w/ strain relief	Color BK = Black* GR = Gray

\* standard



# 1489 IS Series Strain relief w/ Latches for 2.00 mm IDC Female Header

## General specifications

Insulator material PBT w/ 30% glass fiber, UL94V-0

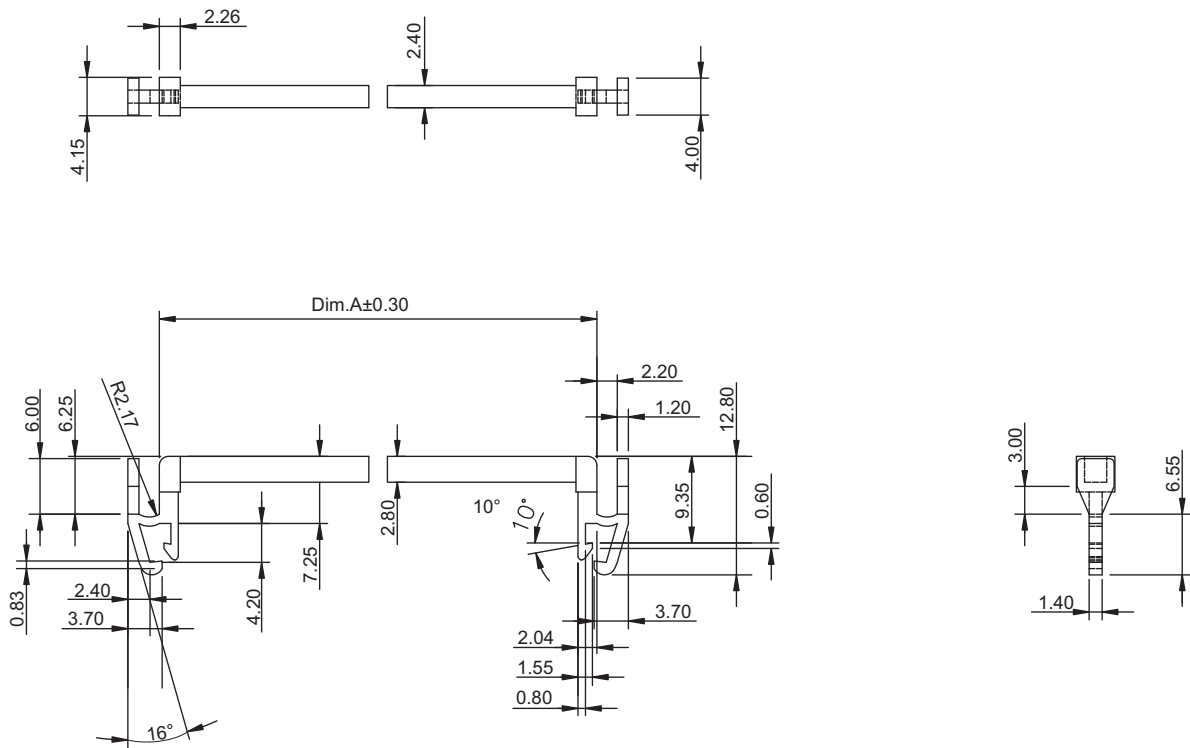
## Mating parts series



RoHS compliant

## Mechanical dimensions

Unit: mm



$$\text{Dim.A} = (\text{No. of contacts} \times 1.0) + 5.40$$

### Tolerances

Linear	X	± 0.30
	.XX	± 0.20
	.XXX	± 0.10

## Part numbering guide

1489 IS

10

BK

Series  
IS = Strain relief w/ latches

No. of contacts  
10 to 16, 20 to 26,  
30, 32, 34, 40, 44,  
50, 60

Color  
BK = Black\*  
GR = Gray

\* standard

