

5940 Series

AC Inlet Socket for P.C.B.

General specifications

Insulator material	Thermoplastic, UL94V-2 to UL94V-0
Current rating	2.5 A
Voltage rating	250 VAC
Insulator resistance	100 MΩ min.
Dielectrical withstanding	2000 VAC for 1 min
Operation temperature	-25 °C to +85 °C
Soldering	Lead free wave soldering process

Safety approvals available, certificates on request

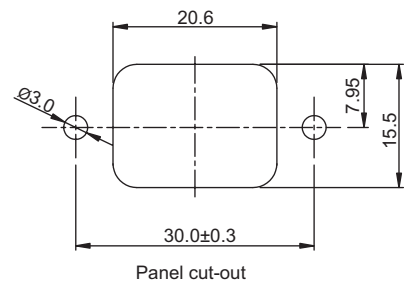
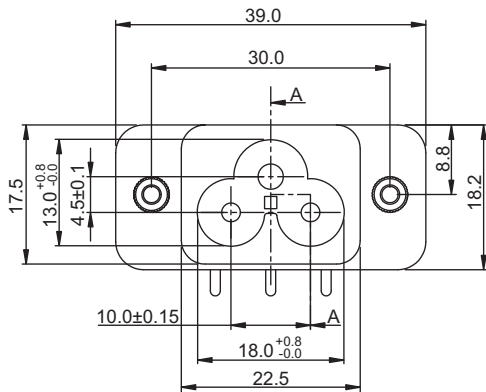
Mating parts series



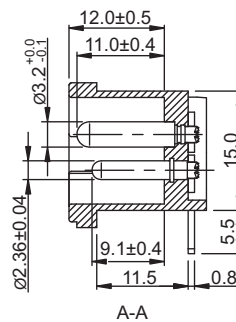
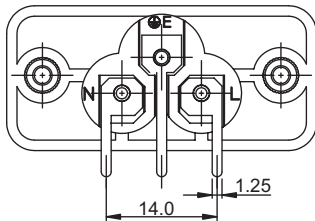
RoHS compliant

Mechanical dimensions

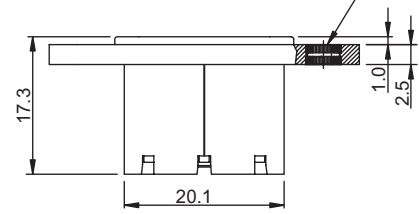
Unit: mm



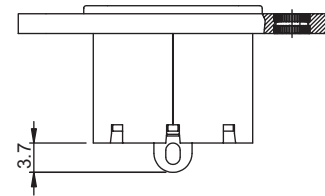
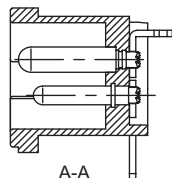
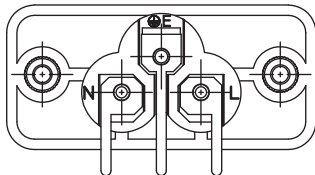
5940A1



Insert nut (M2.5x0.45P)



5940A2



Tolerances	
Linear	XX.XX ± 0.20
	X.XX ± 0.10

Part numbering guide

5940 A

Series

1

Earth terminal

1 = P.C.B.

2 = P.C.B. and add. solder lug

V0

Material

V0 = UL94V-0

V1 = UL94V-1

V2 = UL94V-2

* standard

