

2150 Series

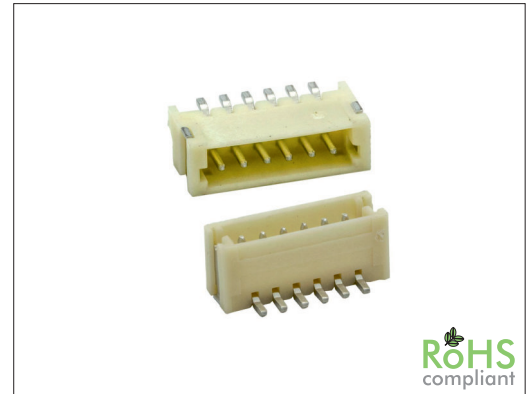
1.50 mm SMT Pin Header

General specifications

Insulator material	High temperature plastic, UL94V-0, color: natural
Contact material	Brass
Current rating	1 A
Voltage rating	50 V AC/DC
Contact resistance	20 mΩ max.
Insulator resistance	500 MΩ min.
Dielectrical withstanding	500 VAC for 1 min
Operating temperature	-25 °C to +85 °C
Soldering	JEDEC lead free reflow soldering process

Mating parts series

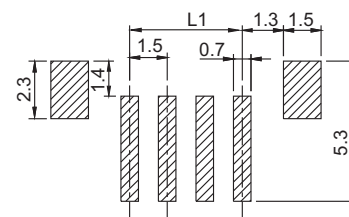
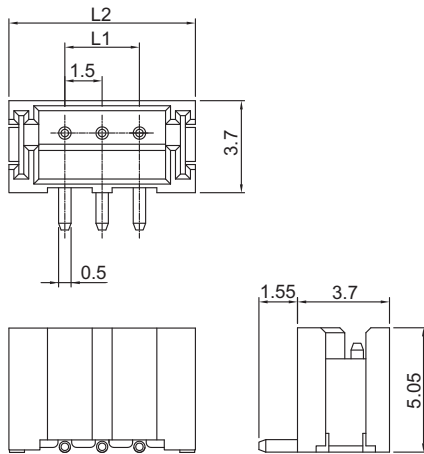
2150-PT or cable assembly



Mechanical dimensions

Unit: mm

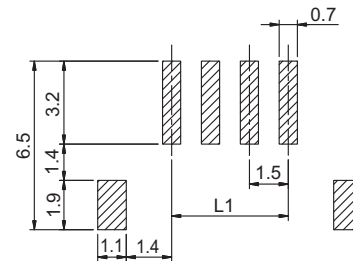
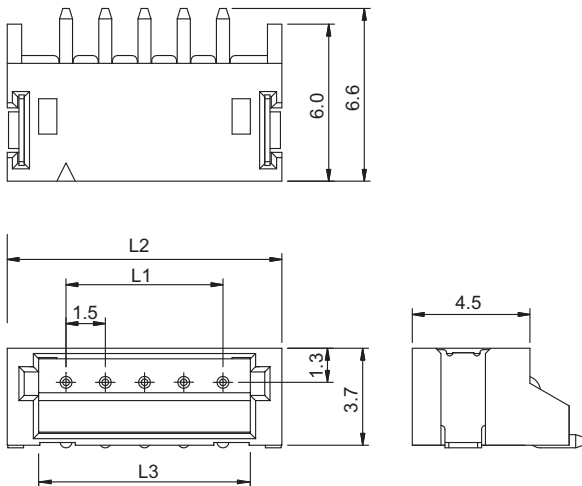
2150V



Recommended P.C.B. layout

L1 = No. of contacts x 1.50 - 1.50
 L2 = No. of contacts x 1.50 + 3.00
 L3 = L1 + 2.10

2150H



Recommended P.C.B. layout

Tolerances		
Linear	X	± 0.30
	.XX	± 0.20
	.XXX	± 0.10

Part numbering guide

2150 H

02

T

R

Series
 H = SMT horizontal
 V = SMT vertical

No. of contacts
 02 to 13

Contact plating
 T = Tin

Packing
 R = Reel
 T = Tube

* standard

