

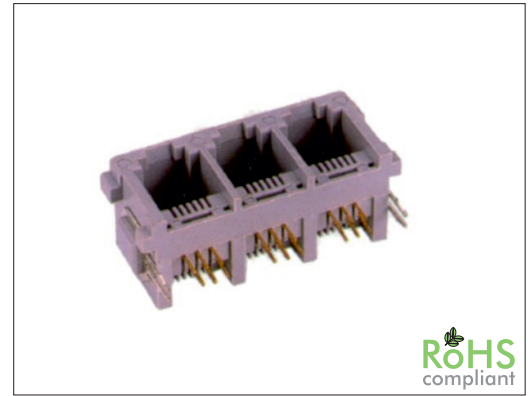
6281X Series

Multiport RJ11 / RJ12 Side Entry

General specifications

Insulator material	PBT w/ glass fiber, UL94V-0, color: grey
Contact material	Phosphor bronze
Current rating	1 A
Voltage rating	150 VAC
Contact resistance	50 mΩ max.
Insulator resistance	200 MΩ min.
Dielectrical withstanding	1000 VAC for 1 min
Operating temperature	-40 °C to +85 °C
Soldering	Lead free wave soldering process
Durability	750 cycles

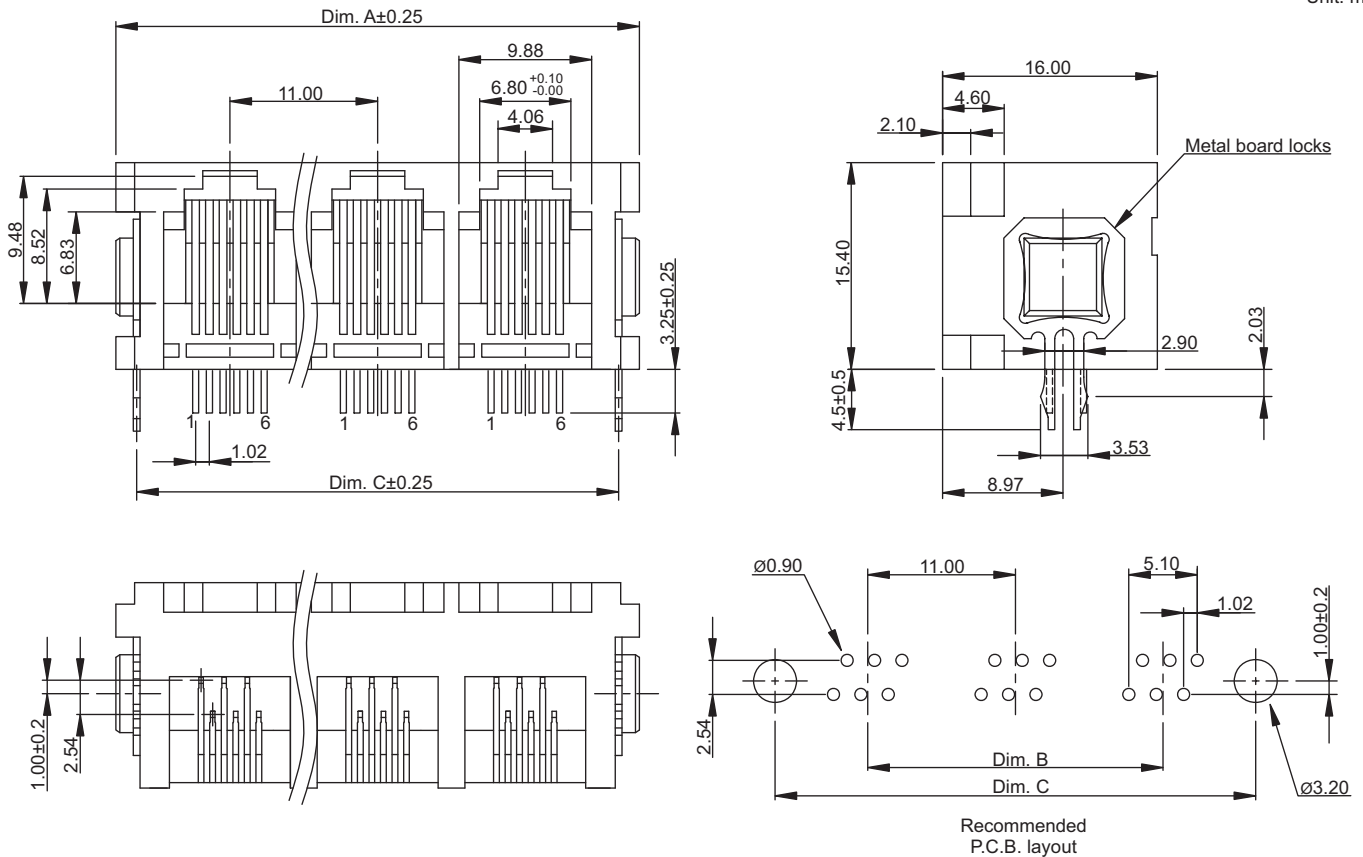
Mating parts series



RoHS
compliant

Mechanical dimensions

Unit: mm



Recommended P.C.B. layout

Ports	Dim. A	Dim. B	Dim. C
1	17.00	-	13.80
2	28.00	11.00	24.80
3	39.00	22.00	35.80
4	50.00	33.00	46.80
5	61.00	44.00	57.80
6	72.00	55.00	68.80
7	83.00	66.00	79.80
8	94.00	77.00	90.80

Tolerances		
Linear	X	± 0.20
	.XX	± 0.15
	.XXX	± 0.10

Part numbering guide

6281	A	C	6	M
Series	No. of ports A = 1 E = 5 B = 2 F = 6 C = 3 G = 7 D = 4 H = 8	Contact plating C = $3 \mu''$ gold D = $6 \mu''$ gold F = $15 \mu''$ gold J = $30 \mu''$ gold	No. of contacts K = $50 \mu''$ gold 4, 6	Board locks M = Metal board locks

* standard

