

2635 Series

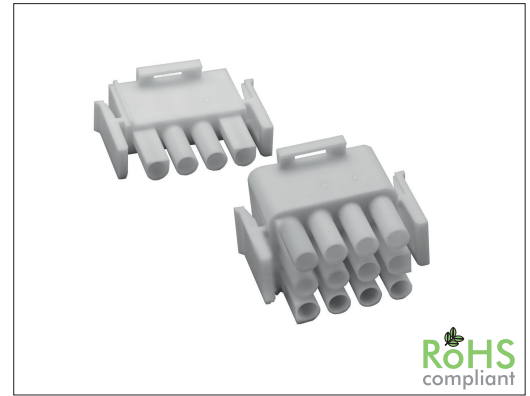
6.35 mm Housing w/ Lock for Male / Female Terminal

General specifications

Insulator material	Nylon 66
Contact material	Brass, plating: tin
Current rating	15 A
Voltage rating	600 V AC/DC
Contact resistance	3.5 mΩ max.
Insulator resistance	1000 MΩ min.
Dielectrical withstanding	2900 VAC for 1 min
Operating temperature	-25 °C to +85 °C

Mating parts series

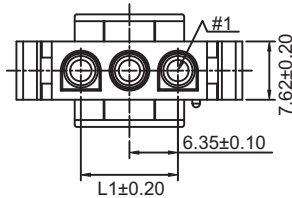
2635F, 2635M, 2635S



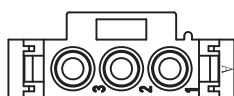
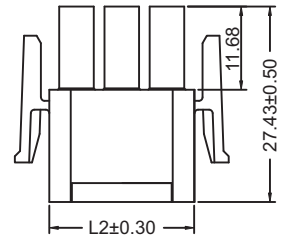
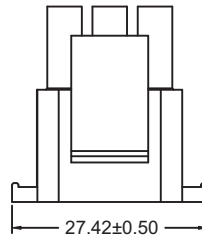
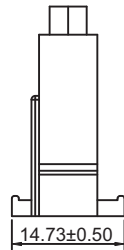
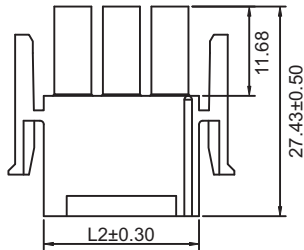
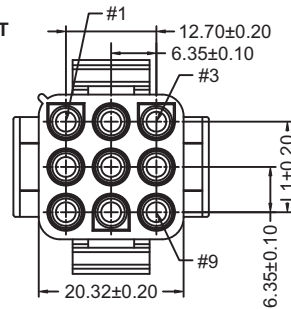
Mechanical dimensions

Unit: mm

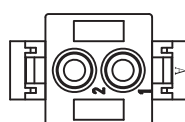
2635PS



2635PT



03 to 08 pin



02 pin

L1 = No. of contacts / 3 x 6.35 - 6.35
L2 = L1 + 7.62

L1 = No. of contacts x 6.35 - 6.35
L2 = L1 + 7.62

For terminal see 2635T / 2635Z

Tolerances

Linear	X	± 0.25
	.XX	± 0.15
	.XXX	± 0.05

Part numbering guide

2635 PS

02

V

Series
PS = Housing single row
PT = Housing tripple row

No. of contacts
1-row = 02 to 06, 08
3-row = 06, 09, 12, 15

Material
V = UL94V-0, color: white *
W = UL94V-2, color: natural

* standard

