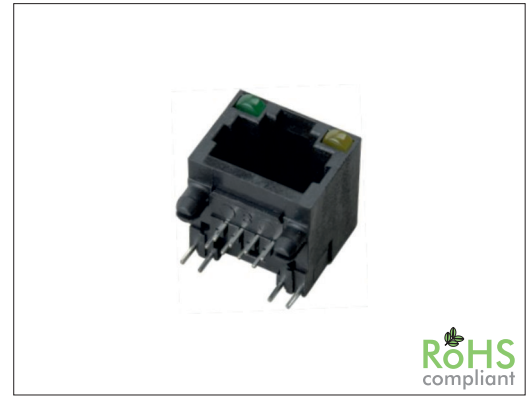


67320 Series RJ45 8P LED Side Entry

General specifications

Insulator material	High temperature plastic, UL94V-0
Contact material	Phosphor bronze, plating: gold over nickel
Current / voltage rating	1.5 A / 125 VAC
Contact resistance	30 mΩ max
Insulator resistance	1000 MΩ min.
LED rating	Forward: 2.2 V / reverse: 5 V
Dielectrical withstanding	1000 VAC for 1 min
Durability	750 cycles
Operation temperature	-40 °C to +85 °C
Soldering	Lead free wave soldering process

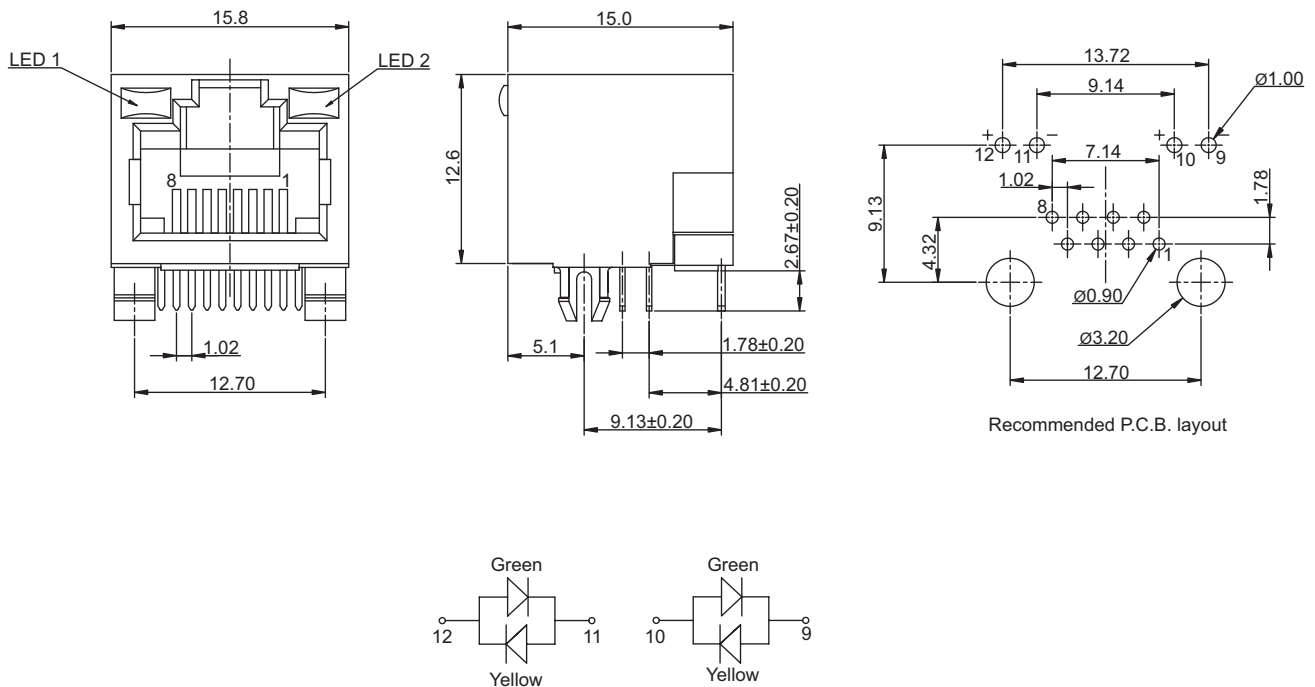
Mating parts series



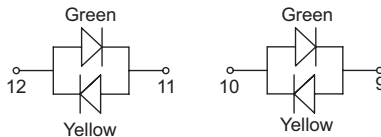
RoHS
compliant

Mechanical dimensions

Unit: mm



Recommended P.C.B. layout



Tolerances		
Linear	X.	± 0.20
	X	± 0.15
	.XX	± 0.10

Part numbering guide

67320	C	G	Y
Series	Contact plating	Color LED1	Color LED2
	C = 3 μ" gold	D = Green/yellow	N = w/o LED
	D = 6 μ" gold	G = Green	
	F = 15 μ" gold	R = Red	
	J = 30 μ" gold	Y = Yellow	
	K = 50 μ" gold		

* standard

