

67100 Series RJ45 8P LED Top Entry Shielded

General specifications

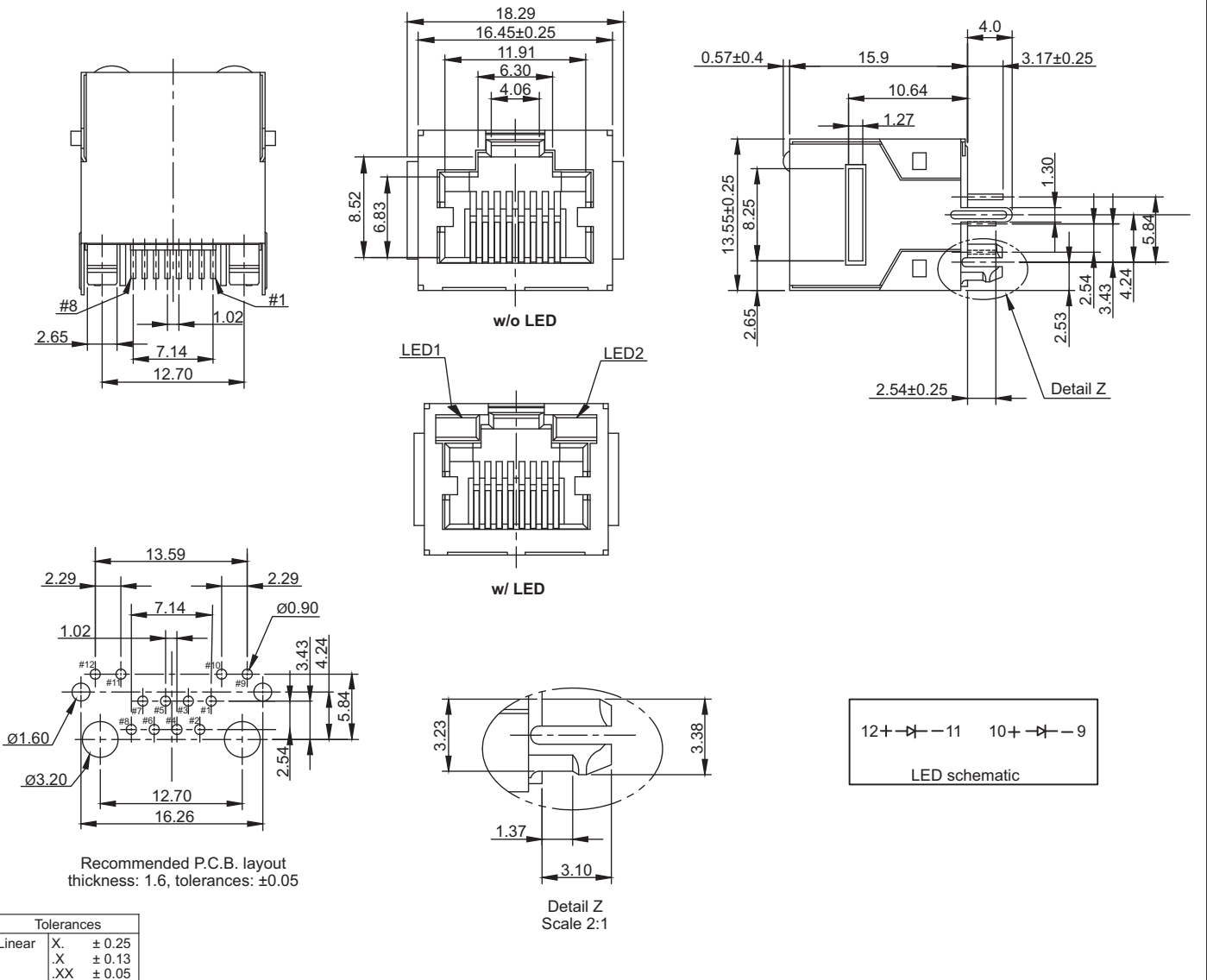
Insulator material	Nylon PA46 w/ glass fiber, UL94V-0
Contact material	Phosphor bronze, plating: gold
Current / voltage rating	1.5 A / 125 VAC
Contact resistance	45 mΩ max
Insulator resistance	1000 MΩ min.
Dielectrical withstanding	1000 VAC for 1 min
Durability	750 cycles
Operation temperature	-40 °C to +85 °C
Soldering	Lead free wave soldering process

Mating parts series



Mechanical dimensions

Unit: mm



Part numbering guide

67100	C	G	Y	1
Series	Contact plating C = 3 μ st gold K = 50 μ st gold D = 6 μ st gold F = 15 μ st gold J = 30 μ st gold	Color LED1 D = Green/yellow G = Green R = Red Y = Yellow	Color LED2 N = w/o LED	Panel stop 1 = w/ stop

* standard

