

# 67760 Series

# Dual Port RJ45 8P LED Side Entry Shielded

## General specifications

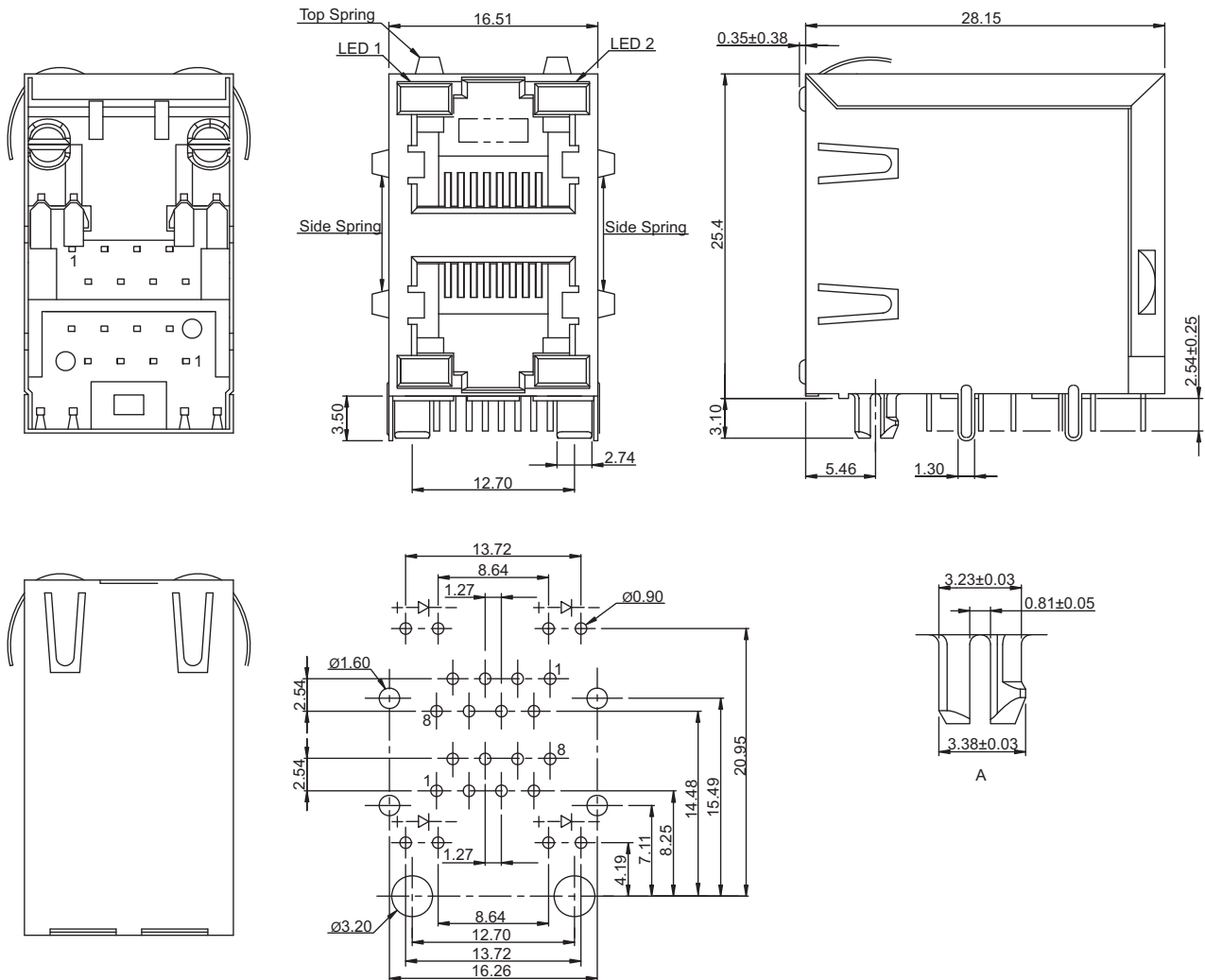
Insulator material	Nylon PA46, UL94V-0
Contact material	Phosphor bronze, plating: gold
Current / voltage rating	1.0 A / 150 VAC
Contact resistance	50 mΩ max
Insulator resistance	200 MΩ min.
Dielectrical withstanding	1000 VAC for 1 min
Durability	750 cycles
Operation temperature	-40 °C to +85 °C
Soldering	Lead free wave soldering process

## Mating parts series



## Mechanical dimensions

Unit: mm



Recommended P.C.B. layout

### Tolerances

Linear	X	± 0.20
	X	± 0.15
	.XX	± 0.10

## Part numbering guide

67760

C

G

Y

0

Series

Contact plating

C = 3 μ" gold J = 50 μ" gold  
 D = 6 μ" gold  
 F = 15 μ" gold  
 J = 30 μ" gold

Color LED1

N = w/o LED  
 D = Green/yellow  
 G = Green  
 O = Orange

Color LED2

R = Red  
 Y = Yellow

Ground spring

0 = w/o spring  
 1 = Top spring  
 2 = Side spring  
 3 = Top and side spring

\* standard

