

1650 Series

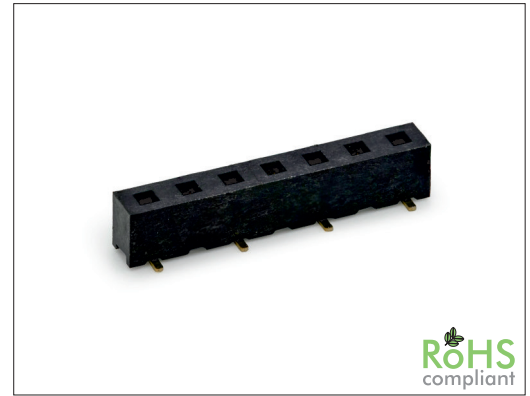
2.54 mm SMT Female Header Dual Entry

General specifications

Insulator material	Nylon 6T, UL94V-0
Contact material	Phosphor bronze
Current rating	3 A
Voltage rating	250 VAC
Contact resistance	20 mΩ max.
Insulator resistance	5000 MΩ min.
Dielectrical withstanding	1000 VAC for 1 min
Operating temperature	-40 °C to +105 °C
Soldering	JEDEC lead free reflow soldering process

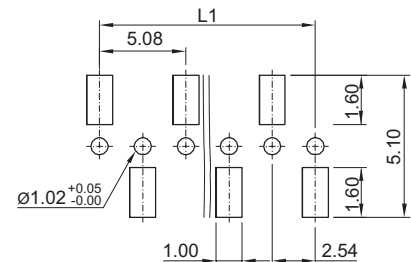
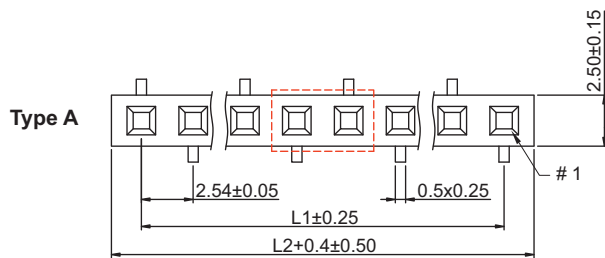
Mating parts series

1510, 1515, 1530, 1610, 1613, 1630

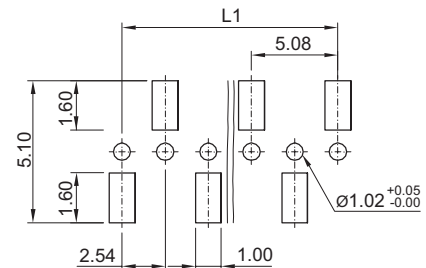
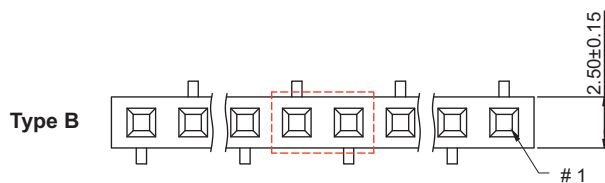


Mechanical dimensions

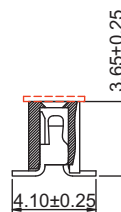
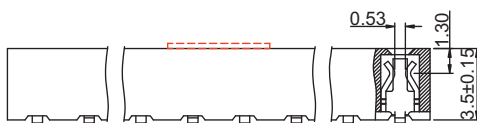
Unit: mm



Recommended P.C.B. layout tolerances ± 0.05

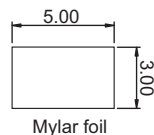


Recommended P.C.B. layout tolerances ± 0.05

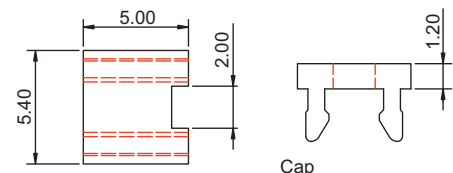


$$L1 = (\text{No. of contacts} - 1) \times 2.54$$

$$L2 = \text{No. of contacts} \times 2.54$$



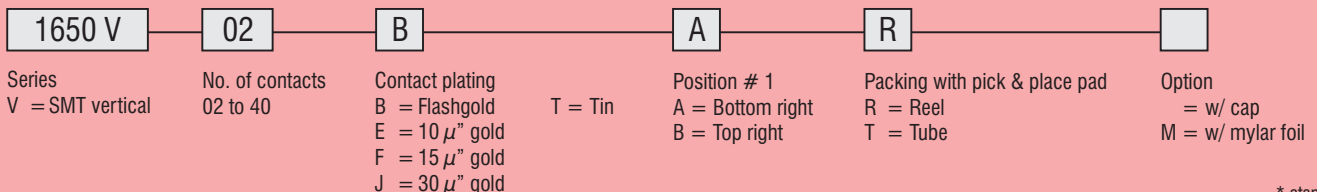
Mylar foil



Cap

Tolerances	
Linear	X ± 0.30
	.XX ± 0.20

Part numbering guide



* standard

