

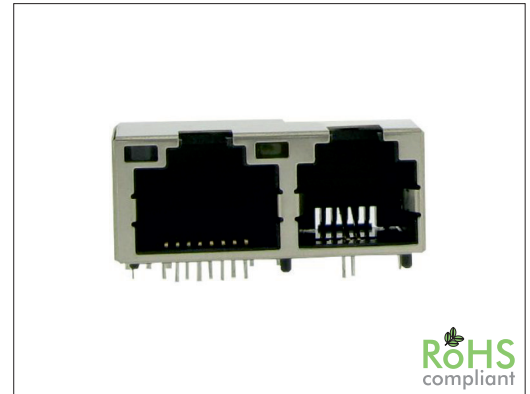
67621 Series

Dual Port RJ11 4P and RJ45 8P LED Side Entry Shielded

General specifications

Insulator material	Nylon PA46, UL94V-0
Contact material	Phosphor bronze, plating: gold
Current / voltage rating	1.0 A / 150 VAC
Contact resistance	50 mΩ max
Insulator resistance	200 MΩ min.
Dielectrical withstanding	1000 VAC for 1 min
Durability	750 cycles
Operation temperature	-40 °C to +85 °C
Soldering	Lead free wave soldering process

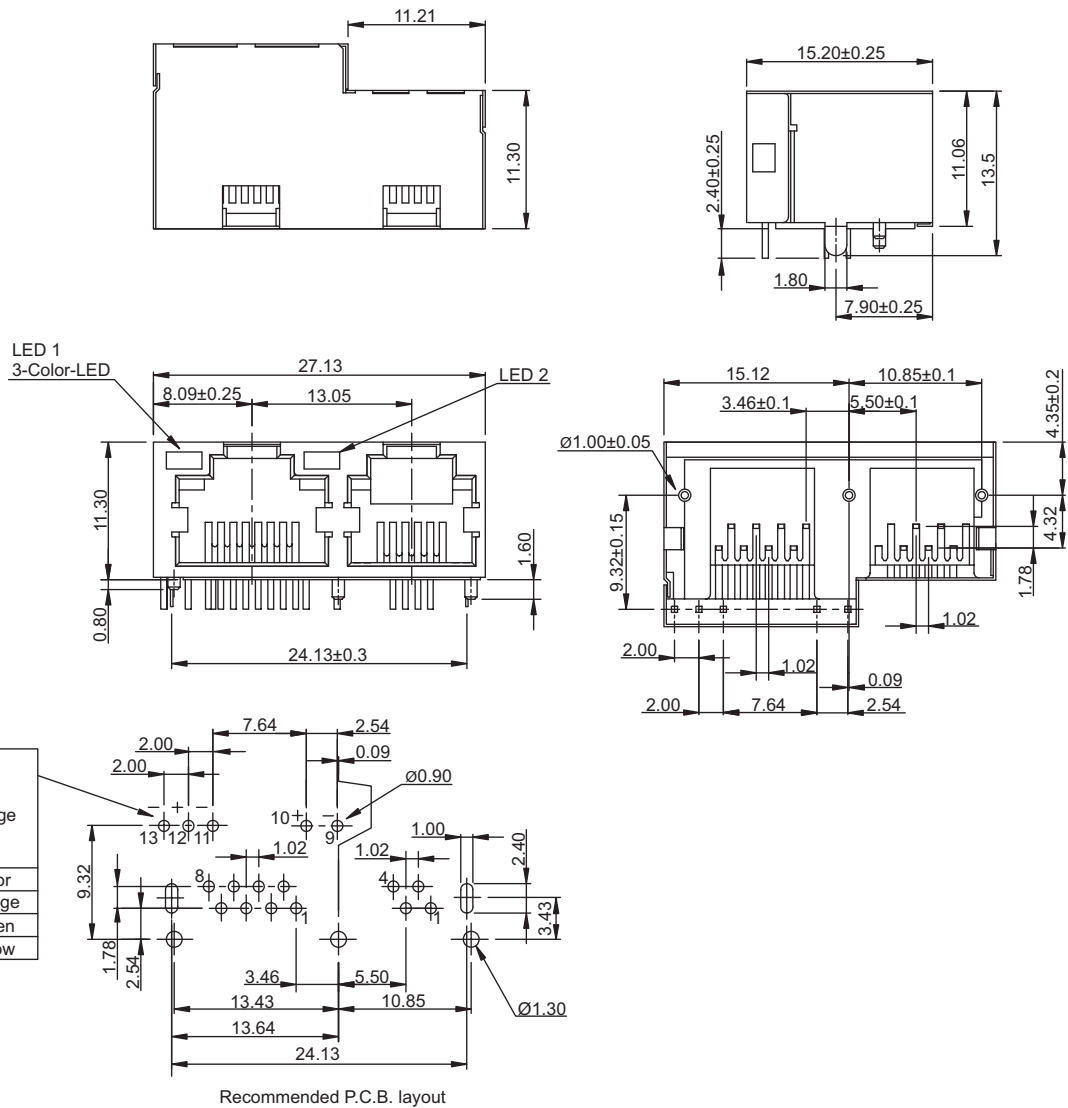
Mating parts series



RoHS
compliant

Mechanical dimensions

Unit: mm



Tolerances		
Linear	X	± 0.25
	X	± 0.20
	.XX	± 0.10

Part numbering guide

67621	C	T	Y
Series	Contact plating C = 3 μ" gold K = 50 μ" gold D = 6 μ" gold F = 15 μ" gold J = 30 μ" gold	Color LED1 T = Green/orange/yellow G = Green R = Red Y = Yellow	Color LED2 N = w/o LED

* standard

