

1440 Series

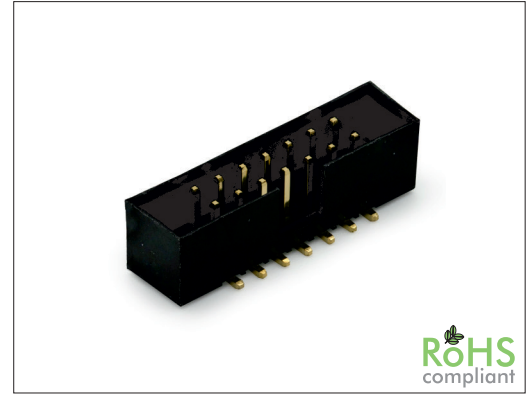
2.00 mm SMT Box Header

General specifications

Insulator material	Nylon-6T, UL94V-0, color: black
Contact material	Brass
Current rating	2 A
Contact resistance	20 mΩ max.
Insulator resistance	3000 MΩ min.
Dielectrical withstanding	500 VAC for 1 min
Operating temperature	-40 °C to +105 °C
Soldering	JEDEC lead free reflow soldering process

Mating parts series

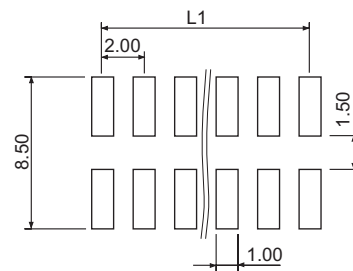
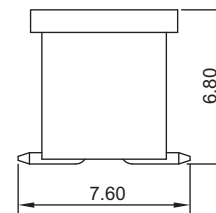
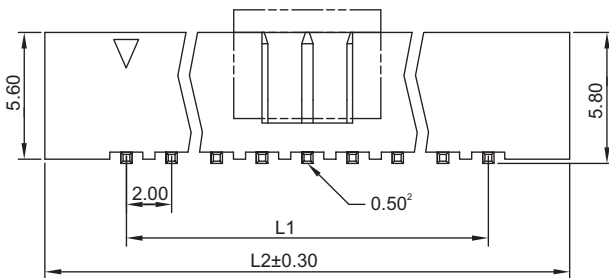
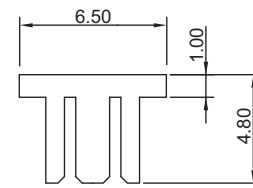
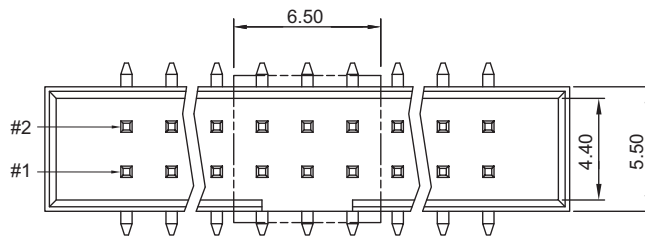
1489, 1490, CA0001 or cable assembly



RoHS
compliant

Mechanical dimensions

Unit: mm



Recommended
P.C.B. layout

$$L1 = \left(\frac{\text{No. of contacts}}{2} - 1 \right) \times 2.00$$

$$L2 = \left(\frac{\text{No. of contacts}}{2} \right) \times 2.00 + 7.20$$

Tolerances

Linear	X	± 0.38
	.XX	± 0.25

Part numbering guide

1440 V — 06 — B — R

Series
V = SMT vertical

No. of contacts
06 to 68

Contact plating
B = Flashgold
E = 10 μm gold
F = 15 μm gold
J = 30 μm gold

Packing with pick & place pad
R = Reel
T = Tube

* standard

