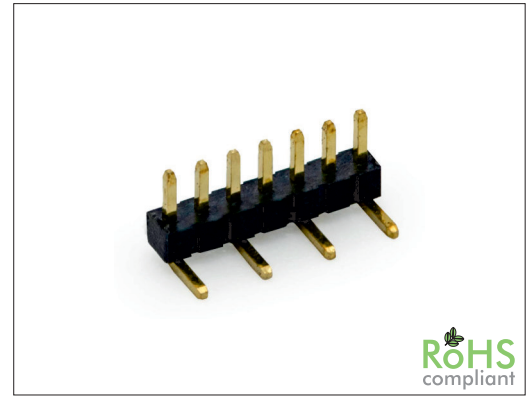


1000 Series

1.00 x 1.00 mm SMT Pin Header Single Row

General specifications

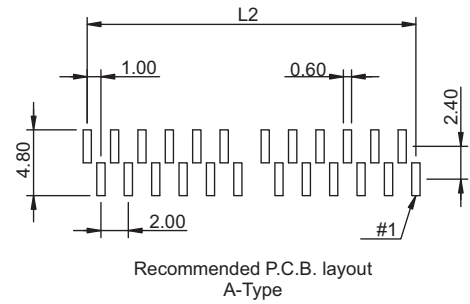
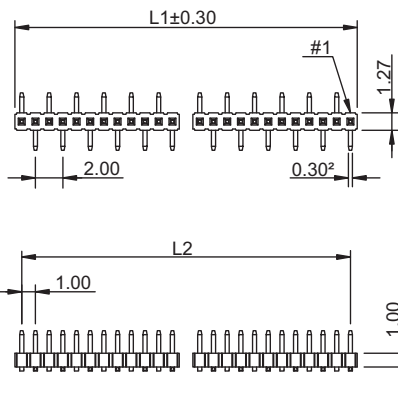
Insulator material	LCP, UL94V-0
Contact material	Phosphor bronze
Current rating	1.0 A
Contact resistance	20 mΩ max.
Insulator resistance	1000 MΩ min.
Dielectrical withstanding	300 VAC for 1 min
Operating temperature	-40 °C to +125 °C
Soldering	JEDEC leadfree reflow soldering process
Mating parts series	
1007	



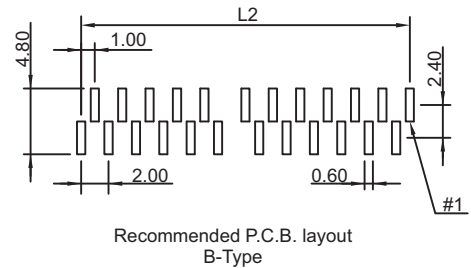
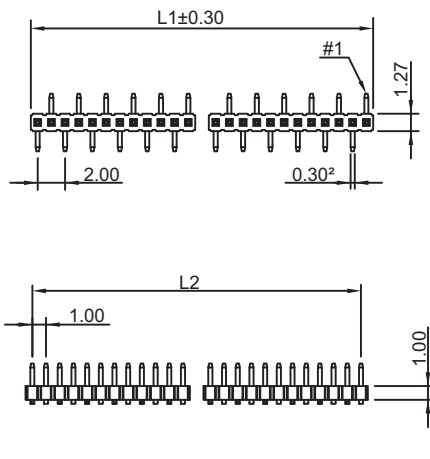
Mechanical dimensions

Unit: mm

A-Type



B-Type



L1 = No. of contacts x 1.00

L2 = (No. of contacts - 1) x 1.00

Tolerances		
Linear	X	± 0.30
	.XX	± 0.20
	.XXX	± 0.10

Ordercode dimensions		
Index	Dim. A	Dim. B
none	1.65	1.30
Other pin length on customer request		

Part numbering guide

1000 V	02	E	A	R	
Series V = SMT vertical	No. of contacts 02 to 50	Plating B = Flashgold E = 10 μ" gold F = 15 μ" gold J = 30 μ" gold	Position pin 1 A = Bottom right B = Top right	Packing with pick & place pad R = Reel	Dimensions index see table

* standard

