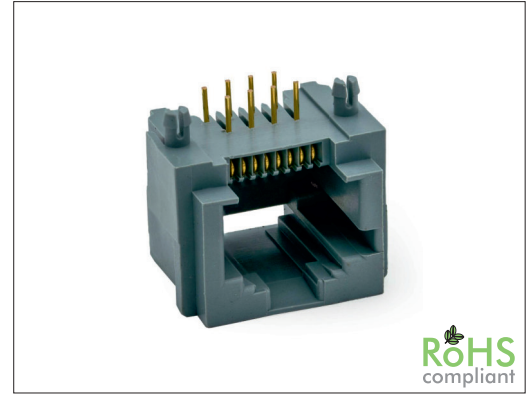


64304 Series RJ45 8P Side Entry

General specifications

Insulator material	PBT w/ glass fiber, UL94V-0, color: grey
Contact material	Phosphor bronze
Current rating	1 A
Voltage rating	150 VAC
Contact resistance	50 mΩ max.
Insulator resistance	200 MΩ min.
Dielectrical withstanding	1000 VAC for 1 min
Operating temperature	-40 °C to +85 °C
Soldering	Lead free wave soldering process
Durability	750 cycles

Mating parts series

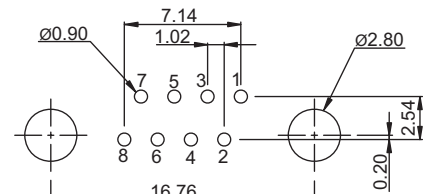
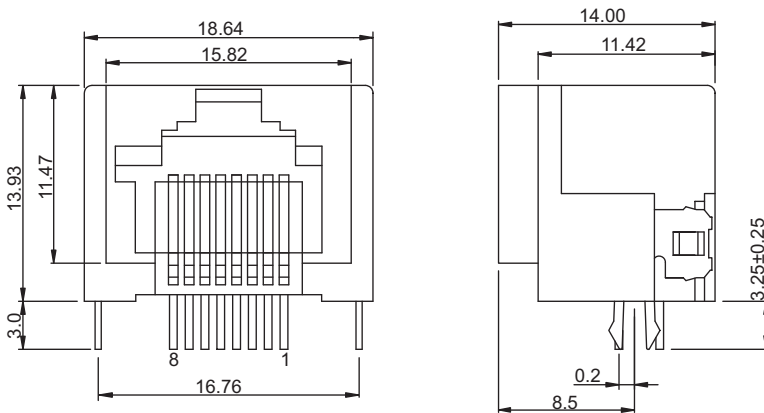


RoHS
compliant

Mechanical dimensions

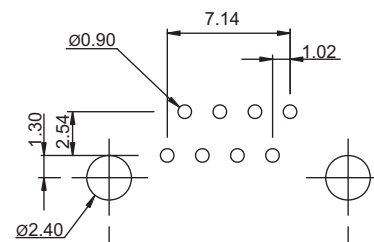
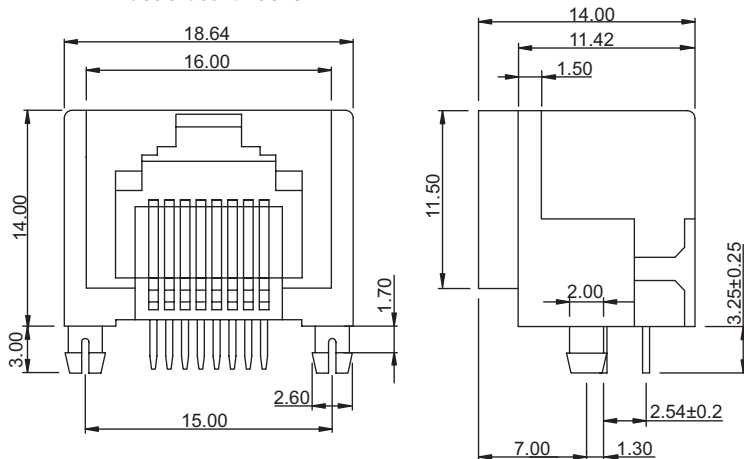
Unit: mm

Metal board locks



Recommended
P.C.B. layout

Plastic board locks



Recommended
P.C.B. layout

Tolerances

Linear	X	± 0.25
	.XX	± 0.13
	.XXX	± 0.05

Part numbering guide

64304 — C — M

Series

Contact plating

C = 3 μ^m gold K = 50 μ^m gold

D = 6 μ^m gold

F = 15 μ^m gold

J = 30 μ^m gold

Board locks

M = Metal

P = Plastic

* standard

