

1445 Series

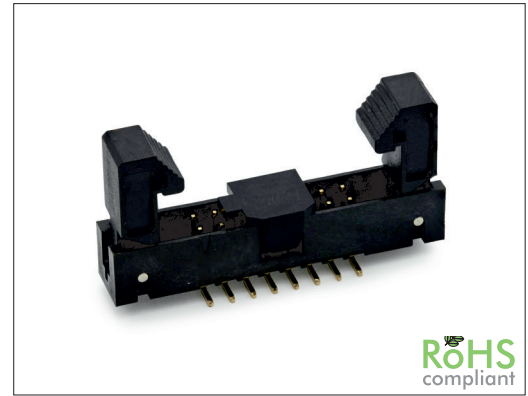
2.00 mm SMT Box Header w/ Latches

General specifications

| | |
|---------------------------|--|
| Insulator material | Nylon 6T, UL94V-0, color: black |
| Contact material | Brass, plating: gold over tin |
| Current rating | 2 A |
| Contact resistance | 20 mΩ max. |
| Insulator resistance | 5000 MΩ min. |
| Dielectrical withstanding | 500 VAC for 1 min |
| Operating temperature | -40 °C to +105 °C |
| Soldering | JEDEC lead free reflow soldering process |

Mating parts series

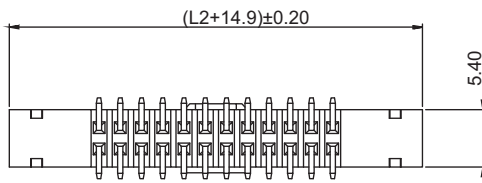
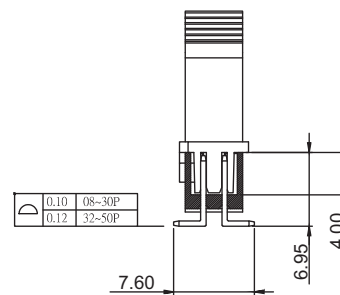
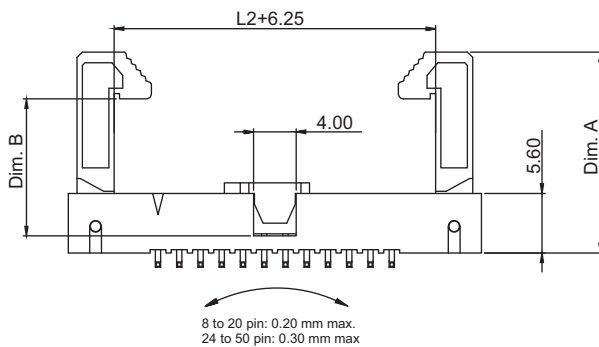
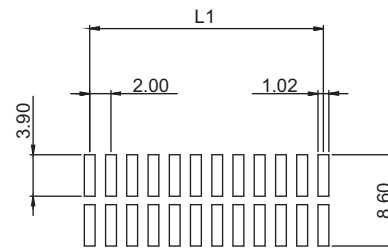
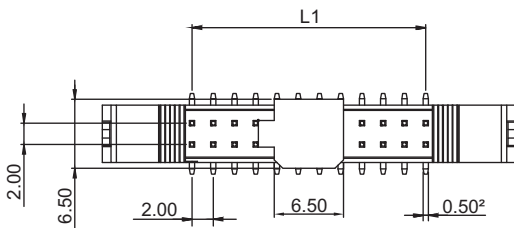
1489, 1490, CA0001 or cable assembly



RoHS compliant

Mechanical dimensions

Unit: mm



$$L1 = \left(\frac{\text{No. of contacts}}{2} - 1 \right) \times 2.00$$

$$L2 = \left(\frac{\text{No. of contacts}}{2} \right) \times 2.00$$

| Tolerances | | |
|------------|-----|--------|
| Linear | X | ± 0.38 |
| | .XX | ± 0.25 |

| Latches | Dim. A | Dim. B |
|---------|--------|--------|
| Long | 18.90 | 12.90 |
| Short | 15.00 | 8.90 |

Part numbering guide

| | | | | |
|------------------|-----------------|-----------------|---------------------------------------|-------------------------------|
| 1445 V | 08 | B | A | R |
| Series | No. of contacts | Contact plating | Latches | Packing with pick & place pad |
| V = SMT vertical | 08 to 50 | B = Flashgold | A = Long latches B = Short latches | R = Reel T = Tube |

* standard

