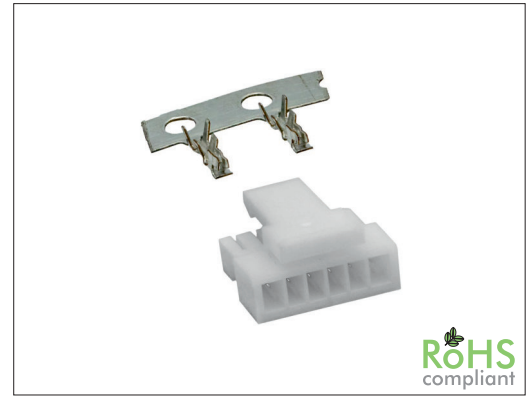


2105 Series

1.00 mm Housing and Terminal

General specifications

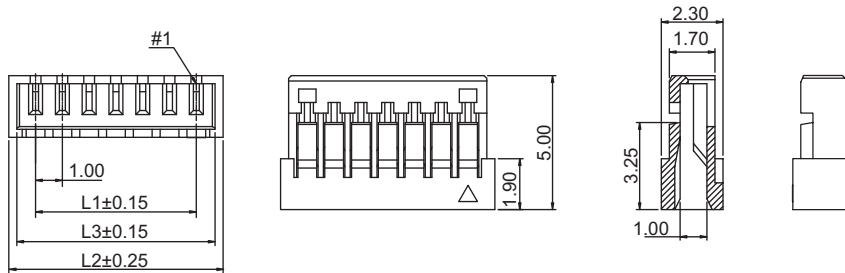
Insulator material	High temperature plastic, UL94V-0, color: natural
Contact material	Phosphor bronze, plating: tin
Current rating	1 A
Voltage rating	125 V AC/DC
Contact resistance	20 mΩ max.
Insulator resistance	100 MΩ min.
Dielectrical withstanding	200 VAC for 1 min
Operating temperature	-25 °C to +85 °C
Mating parts series	
2105-P mates w/ 2105-C and 2105-H, 2105-PL mates w/ 2105-CL, 2105-HL and 2105-VL	



Mechanical dimensions

Unit: mm

2105P

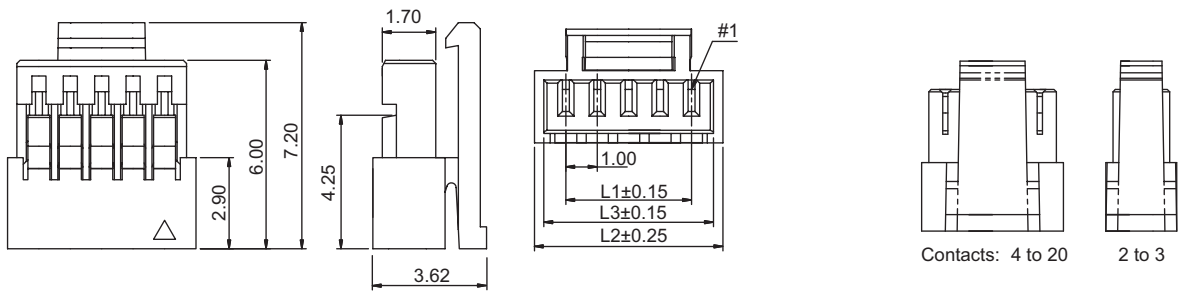


$$L1 = (\text{No. of contacts} - 1) \times 1.00$$

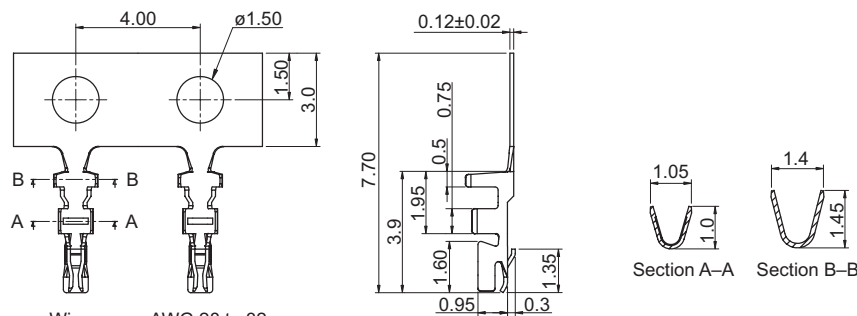
$$L2 = L1 + 2.00$$

$$L3 = L1 + 1.40$$

2105PL



2105T



Wire range: AWG 28 to 32

Tolerances

Linear	X	± 0.25
	.XX	± 0.15
	.XXX	± 0.08

Part numbering guide

2105 P

02

Series No. of contacts
 P = Housing 02 to 20
 PL = Housing w/ lock (leave blank for terminal)
 T = Terminal

* standard

