

1189 Series

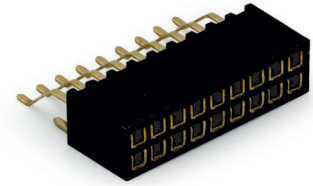
1.27 x 1.27 mm SMT Female Header Side Entry

General specifications

Insulator material	Nylon-6T, UL94V-0, color: black
Contact material	Phosphor bronze
Current rating	1 A
Voltage rating	250 V AC/DC
Contact resistance	20 mΩ max.
Insulator resistance	5000 MΩ min.
Dielectrical withstanding	500 VAC for 1 min
Operating temperature	-40 °C to +105 °C
Soldering	JEDEC lead free reflow soldering process

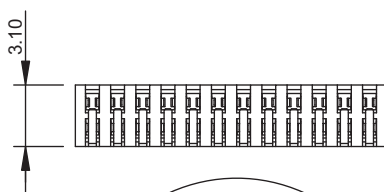
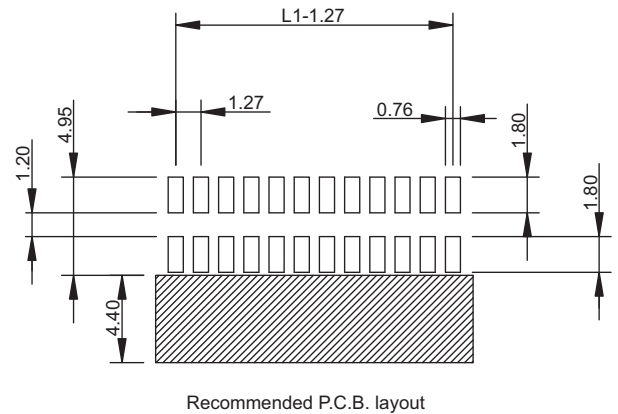
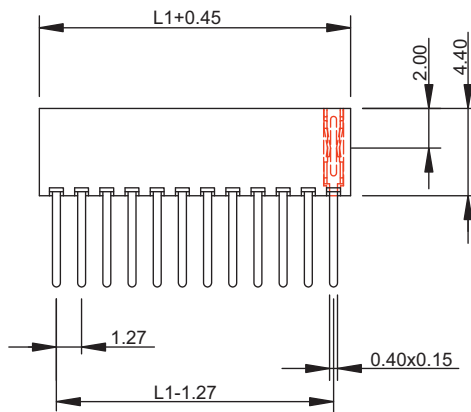
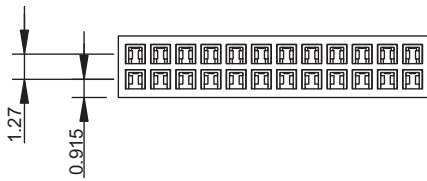
Mating parts series

1104, 1157, 1158

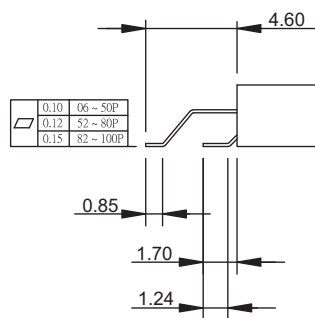


Mechanical dimensions

Unit: mm



04 to 20 pin: 0.10
22 to 60 pin: 0.20
62 to 100 pin: 0.30



Tolerances		
Linear	.X	± 0.30
	.XX	± 0.20
	.XXX	± 0.10

$$L1 = \frac{\text{No. of contacts}}{2} \times 1.27$$

Part numbering guide

1189 H	04	B	R
Series	No. of contacts	Contact plating	Packing
H = SMT horizontal	04 to 100	B = Flashgold E = 10 μm gold F = 15 μm gold J = 30 μm gold	R = Reel T = Tube

* standard

