

1158 Series

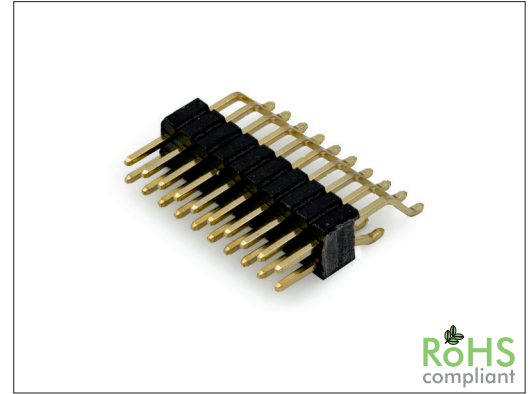
1.27 x 1.27 mm SMT Pin Header Dual Row

General specifications

Insulator material	Nylon-6T, UL94V-0, color: black
Contact material	Brass
Current rating	1 A
Contact resistance	20 mΩ max.
Insulator resistance	1000 MΩ min.
Dielectrical withstanding	500 VAC for 1 min
Operating temperature	-40 °C to +105 °C
Soldering	JEDEC lead free reflow soldering process

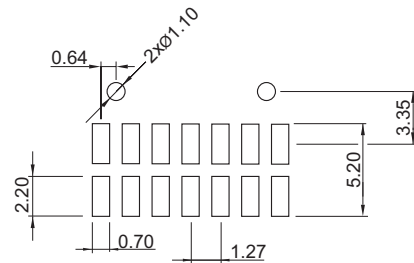
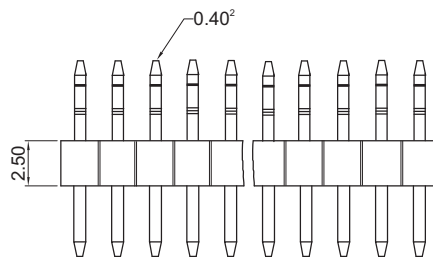
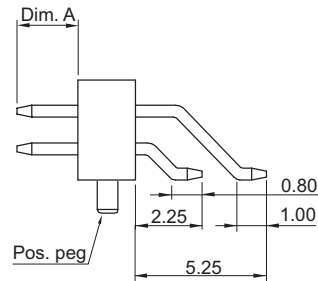
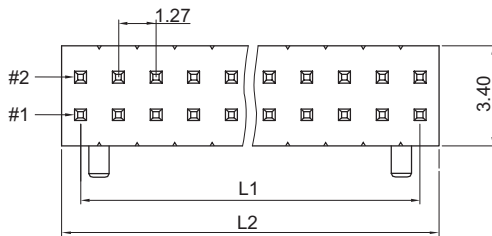
Mating parts series

1136, 1188, 1189, 1134, 1135, 1182, 1184



Mechanical dimensions

Unit: mm



Recommended P.C.B. layout

$$L1 = \left(\frac{\text{No. of contacts}}{2} - 1 \right) \times 1.27$$

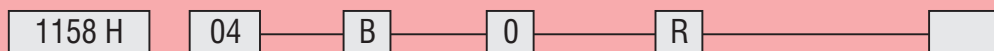
$$L2 = \left(\frac{\text{No. of contacts}}{2} \right) \times 1.27$$

Tolerances		
Linear	X	± 0.38
	.XX	± 0.25

Ordercode dimensions	
Index	Dim. A
none	4.00
01	3.81
02	6.00
03	3.05

Other pin length on customer request

Part numbering guide



Series H = SMT horizontal	No. of contacts 04 to 100	Contact plating B = Flashgold E = 10 μ" gold F = 15 μ" gold J = 30 μ" gold	Position peg 0 = w/o pos. peg 1 = w/ pos. peg	Packing with pick & place pad R = Reel T = Tube	Dimensions index See table
------------------------------	------------------------------	--	---	---	-------------------------------

* standard

