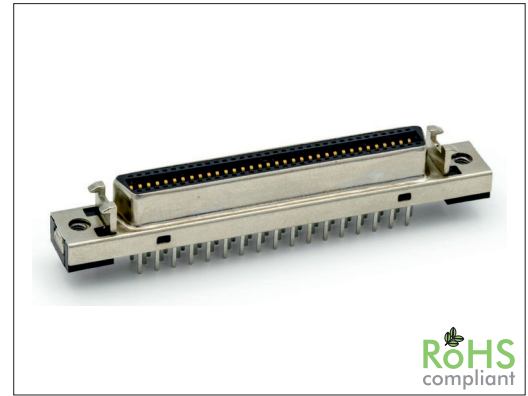


3211 Series

SCSI Ribbon Type Female Straight

General specifications	
Insulator material	PBT, UL94V-0
Contact material	Phosphor bronze
Shell/ bracket	Steel, plating: nickel over copper
Current rating	1 A
Contact resistance	35 mΩ max.
Insulator resistance	500 MΩ min.
Dielectrical withstanding	500 VAC for 1 min
Operating temperature	-55 °C to +105 °C
Soldering	Lead free wave soldering process
Mating parts series	
3218-K	

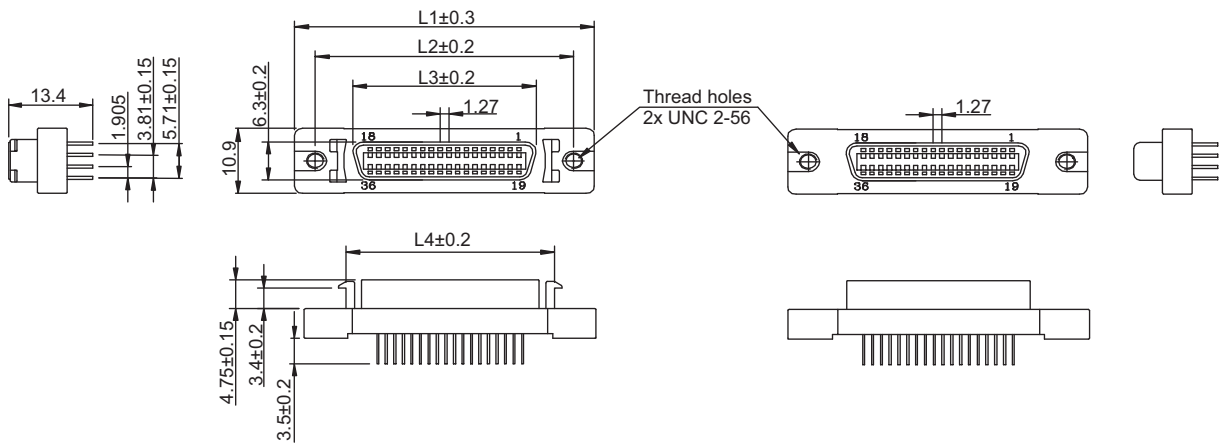


Mechanical dimensions

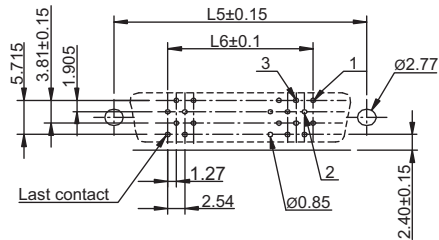
Unit: mm

w/ latch (26, 36, 50, 68 contacts)

w/o latch (26, 36, 50, 68 contacts)



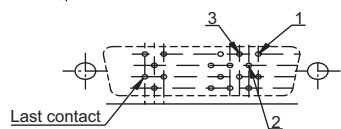
w/ latch (14, 20, 40, 100 contacts)



Recommended P.C.B. layout
20, 36, 40, 68, 100 contacts

Contacts	L1	L2	L3	L4	L5	L6	Bracket opt.
14	29.60	23.64	12.63	17.08	23.64	7.65	L
20	33.40	27.45	16.44	20.60	27.45	11.43	L
26	37.20	31.20	20.25	24.70	31.20	15.24	L/S
36	43.50	37.60	26.60	31.00	37.60	21.60	L/S
40	46.08	40.15	29.14	33.30	40.15	24.13	L
50	52.60	46.50	35.40	40.10	46.50	30.48	L/S
68	64.00	57.90	46.90	51.00	57.90	41.91	L/S
100	84.18	78.23	67.14	71.50	78.23	62.23	L

Tolerances		
Linear	X	± 0.30
	X	± 0.25
	.XX	± 0.15



Recommended P.C.B. layout
14, 26, 50 contacts

Part numbering guide

3211 F	14	D	L
Series F = Female	No. of contacts 14, 20, 26, 36, 40, 50, 68, 100	Contact plating D = 5 μm gold* F = 15 μm gold J = 30 μm gold	Bracket option L = w/ latch S = w/o latch, for screw

* standard

