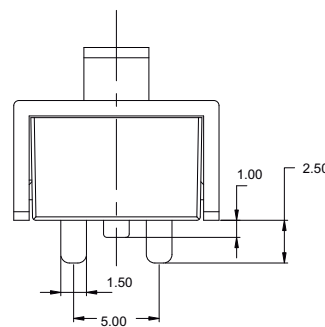
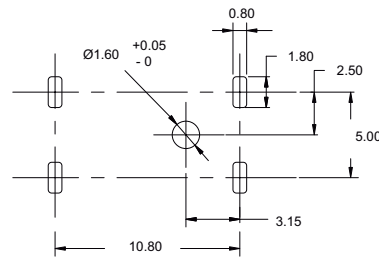
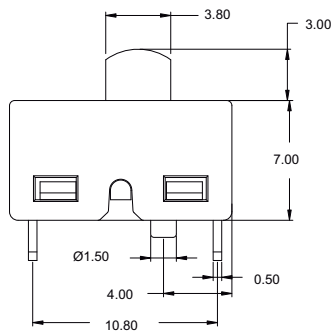
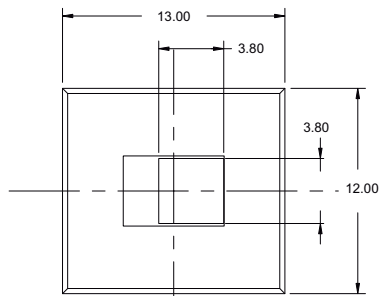
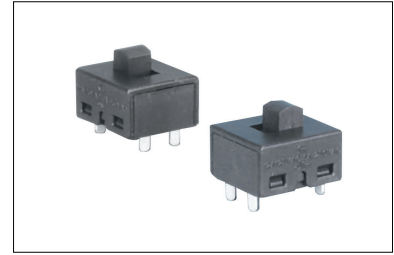
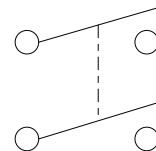


Specifications	
Contact rating	12 A @ 125 VAC 6 A @ 250 VAC T105
Durability	10000 cycles
Contact resistance	50 mΩ max. initial
Insulator resistance	100 MΩ min.
Dielectrical withstanding	1500 VAC (terminal enclosure), 500 VAC (terminal polarities)
Operation temperature	-10 °C to +105 °C
Materials	
Housing	Nylon PA6T
Actuator and cover	Nylon PA66 black
Terminal and lever	C2680 1/H, plating: silver
Contact	Silver alloy
Slide button	PTFE



Circuit



Part numbering guide

